



Coventry and Warwickshire

Business Guide 2014/16

innovating, investing, inspiring

Foreword

Earlier this year I returned to Coventry and Warwickshire after several years away in the United States, to take up the chairmanship of the Local Enterprise Partnership (LEP).

I have had long connections with the area after working as the Managing Director of Jaguar, and living and raising a family in the area, and wanted to support our local economic and community development.

Returning from outside the UK certainly gave me a fresh perspective free of any recent "baggage".

What I found was an area on the cusp of very exciting times. We are very well placed in several key sectors – primarily advanced engineering and manufacturing, we have some strategically important companies, two excellent universities and some very creative and innovative people.

And all of that is set in an appealing environment with key attractions and a unbeatable location.

These are all the right ingredients in the mix of what makes for a vibrant economy.

But merely having the right ingredients does not alone ensure success. This is where I passionately believe the CWLEP has a central role to play.

Our LEP was established to drive forward the economy, to help create the right environment which can see existing companies grow, new ones arrive, jobs be created and wealth generated for the common good.

We are a partnership of private sector business leaders and public sector elected members all united to achieve those aims.

The CWLEP has already achieved some significant steps. For example, it has helped attract £130 million of funding support to Coventry and Warwickshire, and it has established a Growth Hub to allow our engineering and manufacturing companies to access support through a 'one stop shop'.

In addition, we recently secured a deal with the Government's Local Growth Fund which looks set to be worth £74.1 million to support economic growth.

The deal has confirmed £18.2 million of funding for 2015/16 and has made an initial commitment of £55.9 million for 2016 onwards.

That will have a sizeable and swift impact on a number of key initiatives including the North-South Rail and Coventry Station scheme, provision of new Advanced Manufacturing and Engineering "Grow On" Space for small and medium enterprises at Ansty, and skills and start-up initiatives in Coventry, Stratford and Leamington.

While all this is very encouraging, further increases of funding in the future, will require us all to work more closely together and put aside some historical practices for the benefit of the whole of Coventry and Warwickshire.

Our LEP and all it's partners have generated good momentum, we need your engagement and support to grow this even further for the good of the whole of Coventry and Warwickshire. I hope you enjoy this directory and find it useful to your business.



A handwritten signature in black ink, appearing to read 'J. Browning'.

Jonathan Browning,
Chairman Local Enterprise Partnership (LEP)



Coventry & Warwickshire
Local Enterprise Partnership

When business works better, the world works better

How do we build a better working world?

We start with the world that matters most to you.

The world of your business, your customers, your career, your community, your family.

The things that affect you and the things you affect.

One step at a time.

One insight at a time.

Because when business works better, the world works better.

How do we help to create better?

By inspiring trust in the capital markets and helping to keep them flowing.

By working with governments and business to foster sustainable, long-term growth.

Enduring growth.

By encouraging the development of the people who are – and will be – the builders, the visionaries, the achievers.

We're making it our purpose to help build a better working world.

Starting with yours.

better begins here:
ey.com/betterworkingworld
[#betterworkingworld](https://twitter.com/betterworkingworld)



Building a better
working world



Leading the way in the Midlands



3,200,000 ^{SQ FT}
of mixed use space

37
acres linking the station and city core

25
sustainable buildings set in vibrant public realm

14
Grade A office buildings

1
FRIARGATE



Ian Stringer

T: 0121 609 8308
E: ian.stringer@gva.co.uk

Adrian Griffith

T: 0121 609 8347
E: adrian.griffith@gva.co.uk



Hotels | Retail | Office | Residential

friargatecoventry.co.uk

Coventry and Warwickshire

Business Guide 2014/16

Contents

Coventry and Warwickshire LEP	9	Key Sectors	30
City Deal	13	It's How You Make It	38
Local Growth Fund	14	Developing a Workforce for the Future..	44
Coventry and Warwickshire.....	18	Knowledge is King	50
Everything You Need in One Place.....	19	Developing for the Future.....	53
Location, Location, Location	28	Relax and Enjoy	58

Published by:
Burrows Communications Limited

Cantium House, 2nd Floor, North West Suite, Railway Approach, Wallington, Surrey SM6 0DZ
Tel: 020 8773 3000 • Fax: 020 8773 3008 • Email: postmaster@burrows.co.uk • Web: www.burrows.co.uk

Our Advertisers:

We gratefully acknowledge the support of all the firms whose advertisements appear in these pages. Without their help we would not be able to produce this directory. As a reciprocal gesture we have pleasure in drawing the attention of our readers to their announcements, but wish to make it clear that Burrows Communications Ltd can accept no responsibility for their products or services advertised.

Brand new homes & apartments coming soon to Coventry



City Wharf, Foleshill Road, City Centre, Coventry, CV1 4NU



With Barratt it's simple:

- ✓ A great city centre location next to the Coventry Canal
- ✓ Perfect for first time buyers and investors
- ✓ We have a range of schemes to help you move
- ✓ Register online to receive updates and your exclusive invitation to our launch event in July

1 & 2 bed apartments and 3, 4 & 6 bedroom homes at City Wharf



It's an easy move at barrathomes.co.uk or call 0844 811 3377



Computer generated images are for illustrative purposes only and individual features often vary from one plot to another. These images are for general guidance only and are not intended to form part of any contract or warranty.



RICOH ARENA

- **20,000sqm** of event space
- **121 bedroom** hotel onsite
- One of the **largest casinos** in the UK
- **2,000** onsite car parking spaces
- Within **2 hours drive** of 75% of the country



Email events@ricoharena.com

or call on **0844 873 6350**

Go discover ricoharena.com

DE VERE
@THE RICOH ARENA





mtc
Manufacturing
Technology Centre

**Aerospace
Research Centre
(under construction)**

mtc
Manufacturing
Technology Centre

**Ansty
Park**

Junction 2, M6/M69, Coventry
The 1.5 million sq ft Technology Park

HTRC

**High-Temperature
Research Centre
(under construction)**

mtc
Manufacturing
Technology Centre

**Academy
(under construction)**

Sainsbury's

Assisted Area Status

Land and Building Opportunities

Contact:

Steve Holland
T: 0121 234 9971
M: 07766 470 220
e: steve.holland@hca.gsi.gov.uk



**Homes &
Communities
Agency**

Ansty Park - no longer the region's best kept secret

Success at Ansty Park has largely gone unnoticed, despite the significant presence of Sainsbury's and the Manufacturing Technology Centre....until now!

Recent visits by David Cameron, George Osborne and Vince Cable show the important role that Ansty Park has in the government's long-term economic plan.

Steve Holland, at HCA, who own Ansty Park, commented: "This is an exciting time for Ansty Park, which now has Assisted Area Status, with three exciting developments underway."

Construction has now commenced on the £15.2 million MTC Aerospace Research Centre which will provide a national centre for aerospace research and the National Manufacturing Training Academy.

In addition, a 6,000 sq m High-Temperature Research Centre is being built as a joint collaboration between the University of Birmingham and Rolls-Royce.

When completed there will be 140,000 sq m of accommodation on this business/ technology park so there are plenty of opportunities to share this innovative and collaborative working environment.

Lyons Park+

Coventry (A45 to M6, M42 and M40)



The regeneration of Jaguar's Browns Lane site. At the heart of Coventry, Lyons Park is a major new industrial, distribution and hi-tech office development totalling 800,000 sq ft.

Build to Suit opportunities on either a leasehold or freehold basis are available from 7,500 sq ft to 300,000 sq ft.

Speculative development of five units from 30,000 sq ft – 50,000 sq ft. Completion Spring 2015.

www.lyonspark.com



Richard Meering
richard.meering@cbre.com
Melissa Wase-Rogers
melissa.wase-rogers@cbre.com



Ranjit Gill
rsgill@savills.com
Charles Spicer
caspicer@savills.com



Rugby Radio Station

Integrated development at the heart of the UK



Sustainable Urban Extension (SUE)

- ✦ Outline planning consent granted May 2014
- ✦ 6,200 new homes
- ✦ Approximately 1 million sq ft of new employment/commercial space

DIRFT III

- ✦ Development Consent Order (DCO) issued July 2014
- ✦ Approximately 9 million sq ft of rail-connected logistics/employment space



Northamptonshire
County Council

For more information, please contact:

Urban&Civic ✦ **SUSTAINABLE URBAN EXTENSION:**
James Scott at Urban & Civic on
jds@urbanandcivic.com or visit
www.radiostationvision.co.uk



✦ **DIRFT III:** Robin Woodbridge at Prologis
on RWoodbridge@prologis.com
or visit www.dirftiii.com



Urban&Civic



Coventry and Warwickshire LEP

The Government established Local Enterprise Partnerships to help determine local economic priorities, lead financial growth and create jobs in their area.

The Coventry and Warwickshire Local Enterprise Partnership (CWLEP) was established in 2011 as a partnership between private and public sector organisations.

The four key objectives of the CWLEP, under the guidance of chairman Jonathan Browning, are:

- To drive economic growth
- To help remove barriers to economic growth
- To help create high value jobs
- To co-ordinate local government co-operation and support

The CWLEP has eight business groups which focus on improving business conditions to ensure there is the platform to increase jobs and economic prosperity.

The groups – planning, funding and access to finance, skills, energy, transport, high value manufacturing, small and medium businesses and international business – are made-up of experts in their relevant fields.

Coventry and Warwickshire is home to many of the world's leading companies such as Jaguar Land Rover, E.ON, Aston Martin, Severn Trent, Peugeot Citroën, Rolls-Royce, IBM, the Tata Group and BMW as well as the renowned universities of Coventry and Warwick.

There is a global research and development focus at key assets including the Manufacturing Technology Centre, the Warwick Manufacturing Group, Jaguar Land Rover and MIRA along with the two universities.

The CWLEP wants to make Coventry and Warwickshire an attractive place to live and work by building on the vibrancy and diversity of business and leisure facilities throughout the area ranging from Coventry to Stratford-on-Avon and Rugby to Royal Leamington Spa.

The area has an excellent central location since it is at the heart of the rail and motorway network with London only an hour away by train and the second city of Birmingham just a short drive away – factors which are important to attracting inward investors.

For further information, visit www.cwlep.com or email contact@cwlep.com





Insightful Expertise Delivering Commercial Property Solutions For Over 170 Years

Sales ● Lettings ● Auctions ● Acquisitions ● Investments ● Development
Rent Reviews ● Lease Renewals ● Rating ● Valuations ● Management



SOLD ● LET ● SOLD ● LET ● SOLD ● LET ● SOLD ● LET

OFFICE, INDUSTRIAL & RETAIL SPACE EXPERTLY MANAGED THROUGHOUT THE MIDLANDS

Commercial Property Consultants with five offices
across Warwickshire and the West Midlands.

T: 024 7622 8111

E: commercial@loveitts.co.uk

View all properties:

www.loveitts.co.uk



Employment & Business Law Solicitors



Sandra Garlick
Member, Employment & Business Law Solicitor

Contact Sandra and her team for expert advice on:

- Settlement Agreements
- Redundancy/Unfair Dismissal
- Employment Tribunal Proceedings
- Contracts of Employment
- Business Sales/Purchase
- TUPE
- Discrimination
- Disciplinary/Grievance

askews

ASKEWS LEGAL LLP AN ASSOCIATE OF De Marco

ACCOUNTANCY | INSURANCE | LEGAL

Email: Sandra@askewslegal.co
Telephone: 024 7623 1000
Twitter: @AskewsLegal
Web: www.askewslegal.co

3034005

Taylor Wimpey

Stunning new homes across Coventry and Warwickshire



Find your dream home today

At Taylor Wimpey, we have a range of fantastic new homes available in Coventry and Warwickshire, ranging from 1 & 2 bedroom apartments to 2, 3, 4 & 5 bedroom homes.

With various schemes available including Help to Buy, you could own your dream home sooner than you thought possible! Visit one of our sales offices and find out how you could purchase your new home with just 5% deposit.*

Help to Buy a 4 bedroom home £200,000	• You	5% deposit £10,000*
	• Help to Buy	20% loan £40,000* <small>Interest free for 5 years</small>
	• Lender	75% mortgage £150,000*
	• Taylor Wimpey	100% Dream home



For more information
Call 0121 703 3400
or visit taylorwimpey.co.uk

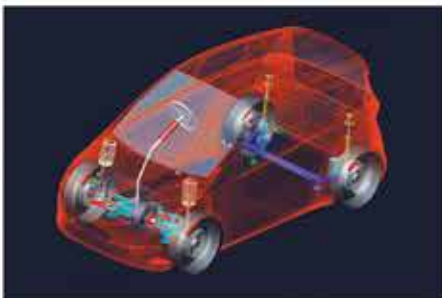


*Normal Taylor Wimpey terms and conditions apply. Images used for illustrative purposes only. Images include optional upgrades at additional cost. Prices correct at time of going to press. Offer available on selected plots and developments only. Eligible applicants will be offered an equity loan of up to a maximum of 20% of the purchase price (based on the open market value). Applicants are required to fund at least 80% of the purchase price by means of conventional mortgage, savings and any deposit where required. For the first five years there is no fee charged on the equity loan component. At the start of year six a fee of 1.75% is payable on the equity loan, which rises annually by RPI inflation plus 1%. The equity loan is provided by the HCA and held as a second charge. Terms and conditions apply and full details will be provided on request. This offer is subject and only available on selected developments and properties in England only. It is not offered with any other promotion. YOUR HOME MAY BE REPOSSESSED IF YOU DO NOT KEEP UP REPAYMENTS ON YOUR MORTGAGE.

3034062



Tata Motors European Technical Centre plc (TMETC), based at the University of Warwick, is a wholly-owned subsidiary of Tata Motors Ltd. Created in 2005 as a UK-based centre of excellence for automotive engineering, TMETC provides research and development principally for Tata Motors and also for selected partners in the automotive industry.



TATA MOTORS EUROPEAN TECHNICAL CENTRE

International Automotive Research Centre, University of Warwick, Coventry CV4 7AL
Telephone: 02476 524717 Website: www.tmetc.com



City Deal

One of the key themes of Coventry and Warwickshire Local Enterprise Partnership's City Deal was to build on the area's strength as a UK hub in advanced manufacturing and engineering.

City Deals allow cities and areas to play a greater role in helping to grow their local economies through added powers and responsibilities.

The City Deal for Coventry and Warwickshire – which was signed by the government in spring 2014 – aims to improve skills, innovation, productivity and help to create more than 15,000 new jobs by 2025.

The CWLEP's proposition was centred around the advanced manufacturing and engineering sector – “Re-engineering Engineering” – with a major emphasis on encouraging growth by making it easier for companies to realise expansion plans through simplifying routes to advice, finance and skills.

A new Growth Hub – which provides a single point of contact for business-led support – is providing access to advisors on key matters relating to business support, access to finance, planning and contacts related to employment requirements and skills as well as providing strong links to government.

Partners involved include the Coventry and Warwickshire Chamber of Commerce, United Kingdom Trade and Industry (UKTI), Coventry City Council, Warwickshire County Council, Coventry University, the University of Warwick and Manufacturing Advisory Service, and it is described as a Growth Hub for Business.

The CWLEP remains committed to having a 'can do' approach to boosting the economy and creating jobs.

To find out more please visit www.cwlep.com/growth-hub
e-mail us at contact@cwgrowthhub.co.uk
Telephone 0300 0603 747



Coventry & Warwickshire
Local Enterprise Partnership



Local Growth Fund

Coventry and Warwickshire Local Enterprise Partnership (CWLEP) has secured a deal with the Government's Local Growth Fund which looks set to be worth £74.1 million to support economic growth.

The Local Growth Fund deal has confirmed £18.2 million of funding for 2015/16 and has made an initial commitment of £55.9 million for 2016 onwards.

This substantial investment from the Government will unlock an additional £32.9 million of investment from local partners and £0.4 million from the private sector which will create a total investment package of £107.5 million for Coventry and Warwickshire.

The CWLEP brings together Warwickshire County Council; the Districts and Boroughs of North Warwickshire, Nuneaton and Bedworth, Rugby, Stratford-on-Avon and Warwick; Coventry City Council; Coventry University; the University of Warwick and private sector representatives.

The announcement means the go ahead for:

- Delivery of the North-South Rail and Coventry Station scheme to improve passenger capacity and secure an increase in train service frequency between Coventry-Bedworth-Nuneaton and a bay platform at Coventry Station
- Provision of new Advanced Manufacturing and Engineering "Grow On" Space for small and medium enterprises at Ansty Park in Rugby. This new facility will complement the work of the Manufacturing Technology Centre
- Develop a new Skills Centre at Coventry City College. This will provide support for young and unemployed people to acquire skills for employment and for marginalised groups to acquire basic skills, especially English and maths
- Provision of business incubator space at 26HT in Leamington Spa to support start-up digital gaming companies and micro enterprises.



- Develop a new Apprenticeship Centre at Warwickshire College. This investment will enable the college to purchase new equipment and refurbish college buildings to provide additional apprenticeship training in advanced manufacturing and engineering
- Provision of new business start-up facilities at Progress House in Stratford-upon-Avon by converting an existing local authority building into a state-of-the-art facility
- Delivery of the Coventry City Centre road access project that will unlock housing growth, support retail regeneration and city centre employment accessibility.

The following projects have provisional allocations starting in 2016/17 and beyond:

- Delivery of the A46/A425/A4177 Stanks road network scheme. This will enhance access to services and facilities to Warwick town centre and facilitate future employment and housing growth.
- Delivery of the A5 Corridor scheme. This will enable the dualling of the A5/A47 Longshoot to Dodwells which will reduce congestion, improve journey time reliability and support economic activity in Warwickshire and Leicestershire.

- Improve links to UK Central, Birmingham Airport and High Speed 2. This scheme will improve key junctions connecting the major employment sites of the University of Warwick, Whitley, Coventry and Warwickshire Gateway and Ansty (via the enhanced A46 corridor) to major national and international gateways.

To find out more please visit www.cwlep.com/growth-hub
 e-mail us at contact@cwgrowthhub.co.uk
 Telephone 0300 0603 747



Coventry & Warwickshire
 Local Enterprise Partnership



Sales and Lettings

Landlord and Tenant

Acquisitions and Disposals

Property Management

Investment

Development advice and implementation

Sales and Lettings

COMMERCIAL PROPERTY EXPERTS

Property Management

Chartered Surveyors

Investment

Strategic Asset Management

Valuation

Rating advice

Acquisitions and Disposals

For further information or advice, please contact us.



TheWigleyGroup

Commercial Property • Insurance • Financial Services

Coventry & Warwickshire through & through



50 years of active involvement in the property and construction sectors, The Wigley Group is perfectly positioned to support businesses in any aspect of their property and risk requirements.

CURRENT OPPORTUNITIES

Topshop Industrial Park - Coventry



So called because this building was the original 'top' workshop of the former Alfred Herbert Works of which it was part. The works were acquired by Wigley's some 30 years ago as a

complete site and has since been developed or sold off in incremental parcels.

Topshop Industrial Park now has planning consent for recladding and conversion to circa 80,000 sq ft of first class facilities with scope for brand new flooring and cladding and subdivisions of the space from 10,000 sq ft up to 80,000 sq ft.

A new access to this park has been created across the newly developed Blue Ribbon Park which permits direct access from Phoenix Way - A444 which is only 1.5km from M6 J3. Access to Coventry City Centre is only 5 minutes drive time. Planning Consents includes B1,B2,B8 consent and as such light industry is permitted.

Henley Road Industrial Estate - Coventry

Situated only 3 minutes from Junction 2 of the M6 this estate is strategically important for clients requiring easy access to the motorway network combined with easy access



to Coventry City Centre. The estate comprises over 100,000 sq ft of existing warehouses for rental and has recently gained planning for additional units which can be delivered to tenant requirements.



The red units on the plan are units for which we have extant consents for new build units and as such these can be delivered to clients at short notice to client specific requirements. Unit 13 and 14 are 3,626 sq ft each or can be built as a single unit and Unit 17 is 8,726 sq ft but can also be built as an extension to the neighbouring unit to provide approximately 16,140 sq ft. Additional consents could be obtained if necessary on this popular estate.

8 The Cobalt Centre, Siskin Parkway East, Middlemarch Business Park, Coventry. CV3 4PE
t. 02476 224600 | info@thewigleygroup.com | www.thewigleygroup.com

Coventry and Warwickshire

Geography

Size: 2076km² (802mi) Distance (length): 81kms (50.3mi)

Demographics:

Population (2012): 871,100 Working age: 556,700



Education / Innovation Assets:

- 1 Coventry University
- 2 University of Warwick
- 3 MIRA
- 4 Manufacturing Technology Centre



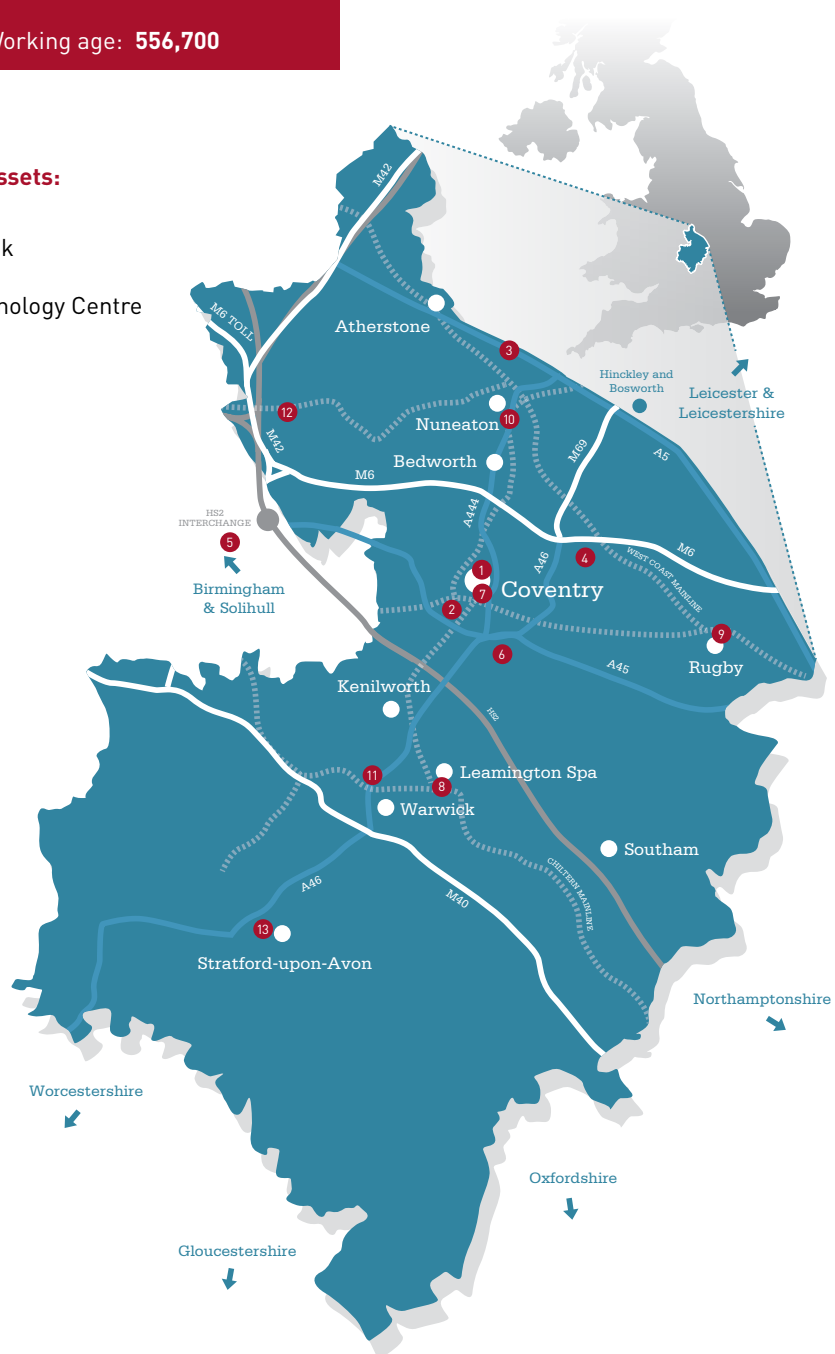
Airports:

- 5 Birmingham Airport
- 6 Coventry Airport



Rail - HS2 Hub

- 7 Coventry Station
- 8 Leamington Spa
- 9 Rugby
- 10 Nuneaton
- 11 Warwick Parkway
- 12 Coleshill Parkway
- 13 Stratford Parkway



Everything You Need in One Place

The historic city of Coventry and the surrounding beautiful countryside, market towns and villages of Warwickshire lie at the heart of England. In a very small and easy to travel area you'll find a host of fantastic experiences from sport to Shakespeare; castles to cars.

Business and innovation is at the forefront of economic growth in Coventry and Warwickshire. Our history and industrial heritage is world-renowned and we have continued to build on this heritage. Presently, businesses in Coventry and Warwickshire possess an enviable international reputation for quality, creativity and flair. Looking to the future, we aim to boost this reputation.

The region is proud to lead the way within the UK in advanced manufacturing, automotive engineering, low carbon applications, intelligent transport solutions and digital gaming. By promoting our local businesses to the rest of the nation and to the world, Coventry City Council, Warwickshire County Council and the Coventry and Warwickshire Local Enterprise Partnership are attracting increasing levels of investment to the region. This investment will initiate the growth of businesses throughout Coventry and Warwickshire.

An attractive, vibrant and diverse area in the geographical heart of the UK, home to many UK-leading companies including Aston Martin, BMW, Codemasters, E.ON, IBM, Rolls Royce, Severn Trent and Tata Group. Coventry and Warwickshire has an exceptional reputation for attracting successful businesses and helping them flourish.

With 871,100 people living within the locality, and a further six million within an hour's drive, there is no shortage of skilled people or customers to help support your business to grow. Coventry and Warwickshire is ranked in the top 10 economic areas in the country for attracting foreign direct investment.

By 2015 91% of properties will be covered with internationally competitive superfast broadband. That, coupled with talented local people and excellent commercial premises in quality urban and rural environments, means there is no better choice than to Invest in Coventry and Warwickshire.

The rich variety of the city and surrounding towns and villages provide a vibrant backdrop for residents to immerse themselves in. Each place has an individual character and distinct offer, making Coventry and Warwickshire a great place to live and work.

We are proud of our past and confident and excited for our future.

We can provide specialist free and confidential support to companies looking to relocate, or expand within our region. If you are looking for commercial premises the team can help you with a property search as well as access to local contacts and networks.

If you want to be part of what's happening in Coventry and Warwickshire please contact us, our services are free and confidential.

To find out more please visit www.cwlep.com/growth-hub
e-mail us at contact@cwgrowthhub.co.uk
Telephone 0300 0603 747



Coventry

Coventry is a dynamic city which welcomes people from all over the world. It is a place where over 300,000 people live and work, has an inspiring world famous history, a rich choice of cultural venues, two world renowned universities catering for students from home and abroad, alongside a number of multi-million pound investments that are dramatically changing the face of the city.

Coventry city centre has changed considerably over the last 18 months. There has been continued investment and grant funding into public realm projects such as Broadgate, Coventry Council House Square and Medieval Spon Street, alongside the planned £300 million retail led City Centre South project, so the look and feel of the city centre for visitors and residents alike will vastly improve.

In 2014 work began on the Friargate development, a £59 million professional quarter located around the city's mainline railway station which has the potential to create 15,000 new jobs. The city is already home to companies such as Severn Trent, Jaguar Land Rover, Peugeot Citroen, Barclays Bank and E.ON.

Rugby Borough

Rugby has an attractive town centre and a rich local heritage, including being the birthplace of rugby football, with strong transport links and good local amenities making it a great place to live and work. The borough is home to an illustrious range of companies including Hewlett Packard, Gap, Alstom, GE Power Conversion, and Rolls Royce.

The town is located at the heart of the logistics 'Golden Triangle' connected by the M1, M6 and M69. Exciting new housing and employment developments have helped Rugby become the fastest growing town in the West Midlands and in the top 10 nationwide.

Rugby has a great mix of restaurants and shops, including high-street names and a popular independent quarter. There is a regular farmers' market and a long-standing open market providing a traditional shopping experience.

Rugby has invested in quality leisure facilities and boasts a number of cultural attractions. The newly built Queen's Diamond Jubilee Centre provides state-of-the-art fitness facilities to residents and there are many local sports clubs. Points of interest in the town include Rugby School, the Webb Ellis Football Museum and the Art Gallery and Museum. There are also many country parks in the immediate and surrounding area to explore.



North Warwickshire Borough

North Warwickshire offers a rural location combined with excellent transport links making it an attractive place to do business. The borough is home to many recognised companies including BMW, Ocado, TNT Logistics and Sertec and benefits from its proximity to MIRA Technology Park with Enterprise Zone Status.

The three market towns of Atherstone, Coleshill and Polesworth are the main retail towns offering a combination of high-street names and independent shops. Various rural outlets provide a unique shopping experience including, Hoar Park Shopping and Craft Village.

North Warwickshire has an array of attractions including Kingsbury Water Park and Hartshill Hayes Country Park. The canal network provides the perfect setting for enjoying the local countryside or you can enjoy a round of golf on some of the UK's most iconic greens at The Belfry, famous for hosting more Ryder Cup matches than any other venue in the world.

BMW Plant Hams Hall



"BMW Plant Hams Hall first opened in 2001 and was the first BMW Group engine manufacturing facility to be built outside of Germany and Austria, recognising the UK as one of the company's key markets.

Our North Warwickshire plant plays an important role in BMW Group's global production network, firmly putting our region on the map.

The state-of-the-art plant has a successful and sustained history of producing small, low emission and highly fuel efficient engines for both BMW and MINI vehicles sold across the world, including engines for the visionary BMW i8 plug-in hybrid sports car.

We are operating in a region famous for its engineering and manufacturing heritage and our skilled and committed workforce of some 800 local people is highly valued. As a premium brand, building to order, a good infrastructure and close proximity to an efficient road and motorway network ensures our business strategy."

Nick Spencer, Plant Director, BMW Plant Hams Hall
www.bmwplanthamshall.co.uk

Nuneaton and Bedworth Borough

Nuneaton and Bedworth offers the combination of cost-effective business units coupled with excellent transport links. Successful companies who already call the borough home include Holland and Barratt, Dairy Crest, Triton Showers, MIRA and Gibbs Aquada, the manufacturer of the exciting and innovative range of amphibian vehicles as seen on BBC's *Top Gear* motoring show.

The towns of Nuneaton and Bedworth both offer a fantastic retail experience for all the family with their bustling high-streets. Nuneaton is home to many well-known names housed in its Ropewalk and Abbeygate Shopping Centres. Additionally, the town's award-winning street-market is a popular attraction pulling in thousands of visitors to the town each week.

The borough offers a variety of cultural and leisure opportunities: Arbury Hall and Estate (birthplace of the author George Eliot); Nuneaton Museum and Art Gallery along with a collection of nature reserves and canal networks.



Warwick District

Warwick District has a Royal Spa town, medieval castles, historic market towns and successful companies, including AHDB, telent, Wanzl, IBM, Ricardo, Force Protection Europe, Dennis Eagle, DCA Design and Thwaites Dumpers.

Within Warwick District there are three towns, all offering a different experience for visitors to enjoy.

Royal Leamington Spa offers a unique shopping experience with a fabulous mix of independent retailers and high-street names attracting a diverse range of customers. It offers an outstanding selection of bars and restaurants which supports a vibrant evening economy. Visitors to the town can also enjoy the Royal Pump Rooms and the award-winning Jephson Gardens.

Warwick, the county town, has a unique historic centre to explore. Together with nearby visitor attractions such as Warwick Castle, Warwick Racecourse, museums, historic houses and gardens, there is something for everyone.

Kenilworth is a small but well catered town, framed beneath the stunning ruins of Kenilworth Castle and recently restored Elizabethan Gardens, famous as the home of Robert Dudley, the great love of Queen Elizabeth I.

Kenilworth and Warwick have an array of independent and popular high-street shops and weekly markets all set within walking distance of the castles.

The district also has a wide-variety of attractive parks and gardens accompanied by art galleries and museums. Riversides, canals and towpaths offer the opportunity to discover more whilst walking and cycling.

Stratford-on-Avon District

The district of Stratford-on-Avon is world-renowned as the birthplace of William Shakespeare. It offers a wide range of commercial, educational and recreational facilities and is home to recognised companies including Aston Martin, Codemasters, Sitel, NFU Mutual and Pashley Cycles.

A diverse retail offer is available across the district ranging from high-street names, independent boutiques, and specialist markets all of which provide a vibrant and unique shopping experience.

As one of the most popular tourist destinations in the UK, Stratford-on-Avon offers an eclectic mix of things to experience, such as enjoying a performance at the Royal Shakespeare Theatre, a round of golf at the Welcombe Golf Club or a tour of the Heritage Motor Centre.



Royal Leamington Spa

ENGLAND'S HIDDEN GEM



Discover this hidden gem in the heart of England. Wide boulevards, beautiful architecture and expansive, award-winning parks provide a sophisticated backdrop to this Regency shopping paradise. You and your employees will find it one of the most appealing towns in the UK.

Royal Leamington Spa Town Centre combines a treasure-trove of independent, specialist boutiques with a rich choice of bistros, exquisite restaurants and evening venues. These are supported by an active Business Improvement District team that ensures Leamington's continued success.



Located right on the doorstep of historic Stratford-upon-Avon, medieval Warwick, and easily accessible by direct train from London, it is the perfect place to work, rest and play!



Visit www.royal-leamington-spa.co.uk

Follow us on  





A TRACK RECORD THAT SPEAKS FOR ITSELF

With an 18-year track record of developing landmark schemes – from stunning modern offices to state of the art, energy efficient distribution and manufacturing facilities – Stoford has the experience and know-how to deliver bespoke buildings nationwide for some of the UK's leading companies and institutions.

1. Admiral Insurance, Cardiff
2. Simplyhealth House, Bristol
3. MOOG, i54 Wolverhampton

4. Severn Trent Centre, Coventry
5. Co-op, Avonmouth

Stoford Developments Ltd
Lancaster House
67 Newhall Street
Birmingham
B3 1NQ
t: 0121 234 6699
e: mail@stoford.com
www.stoford.com



Manufacturing, Commercial Offices, Retail and Industrial



Fusion Building Consultancy is an independent firm of chartered surveyors offering a personal yet highly professional range of specialist services to owner-occupiers, tenants, investors and developers of commercial property across the West Midlands.

We cover a broad spectrum of disciplines from project management to dilapidations, we offer results-driven, focused teams with wide ranging experience from leading consultancy backgrounds.



- Construction Project Management
- Acquisition Surveys
- Dilapidation Advice
- Development and Construction Monitoring
- Business Relocation Management



From concept to delivery



JP5 Specialist Relocation

MOOG

Specialist procurement of JP5 test cell building and facility installation for combined Moog/ Rolls Royce project



Business Relocation Management - currently advising



Contact

Steven Jelfs

T: 0121 236 3515

M: 07977 212426

E: steven.jelfs@fusionbc.co.uk

Fusion Building Consultancy

Griffin House, 19 Ludgate Hill
Birmingham B3 1DW

www.fusionbc.co.uk



THE UK'S BEST
MEDIUM HOUSEBUILDER
2012 & 2013



Photography from Moreton Park, Moreton-in-Marsh

Photography from Eden Park, Rugby



Photography from The Bluebells, Pebworth



YOUR LOCAL NATIONAL HOMEBUILDER
MAKING YOU HOUSE PROUD SINCE 1875

DEVELOPMENTS ACROSS WARWICKSHIRE,
WORCESTERSHIRE AND GLOUCESTERSHIRE.
CALL 01564 797640. CALA.CO.UK

★★★★★ 5 star customer service 5 years running



It's not only water we pump into the region...

Every year we invest around £1 billion into the regional economy.

The benefit goes beyond our customers, employees and suppliers and is felt by a wide range of businesses and people across our region...

Investing over £300m in the local supply chain

Supporting over 4000 local businesses

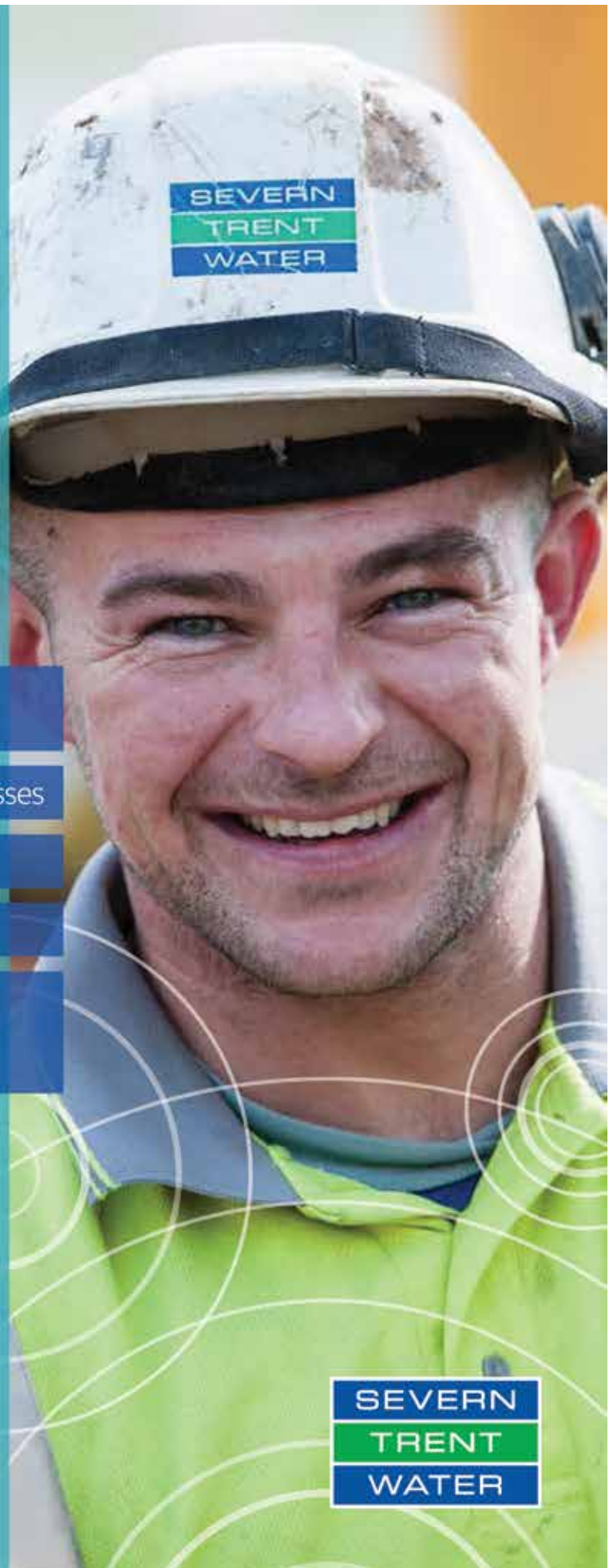
Employing over 5,500 people

Using over 900 regional suppliers

Investing in the future through our apprenticeship and graduate programmes

... and as one of our customers, this investment means you continue to get high quality drinking water and the lowest average combined bills in England and Wales.

Find out how we make a difference at stwater.co.uk/makingadifference



Location, Location, Location



This map is based upon Ordnance Survey material with the permission of Ordnance Survey on behalf of The Controller of Her Majesty's Stationery Office.
Coventry City Council. LA1000026294.2014

Situated in the centre of the UK, Coventry and Warwickshire is an enviable location for any business to be located. Being at the heart of Britain's transport network provides links to road and rail that the rest of the UK strives for.

Drive

98% of the UK is within a 4-hour drive time of Coventry and Warwickshire. Convenient motorway networks include the M6, M40, M42, M45 and M69 and close proximity to the M1 and M5. This network, along with the A14 and A5, provides access to all parts of the UK.

Rail

Coventry and Warwickshire rail facilities have great connections to the north and south of the UK. Recent improvements to the West Coast Mainline mean that journey times from Rugby to London have been reduced to 50 minutes. City to city you can now arrive in 59 minutes and additional improvements to the Chiltern Line have also reduced travelling times from Royal Leamington Spa to the capital, with peak trains getting into London in just over an hour.

Network Rail is investing in infrastructure improvements to upgrade rail freight links via the Hams Hall National Distribution Park (North Warwickshire) and nearby DIRFT (Daventry International Rail Freight Terminal). The Hams Hall site is the Midlands' Channel Tunnel Rail Freight Terminal – now fully operational and run by Parsec, the world leader in terminal operation, development and management. Rail freight terminals are also under development at Birch Coppice Business Park in North Warwickshire and Prologis Park, between Coventry and Rugby.

Air

Birmingham International Airport is the primary airport serving Coventry and Warwickshire and offering daily flights to all European capitals, as well as direct services to the USA, the Far East, Middle East, Africa and Australia. East Midlands airport is also in close proximity.

Birmingham International Airport also offers access to London's three major airports (Heathrow, Gatwick and Luton) via express airlinks. These airports offer worldwide flights to every major destination.

Coventry Airport is a successful freight airport, offering commercial, corporate, business aviation or cargo services. Coventry Airport is also just 35 minutes from London via helicopter transfer.



Key Sectors

Advanced Manufacturing and Engineering

Coventry and Warwickshire is world-renowned as the home of advanced manufacturing and engineering, with particular strength in the automotive sector. There are over 400 businesses in the area employing over 15,000 people and an annual investment of over £100m.



"Jaguar Land Rover is proud to work in Coventry and Warwickshire and champion inward investment in the region. Jaguar Land Rover is the largest manufacturer of premium vehicles in the UK and is at the centre of the UK automotive industry's drive to deliver technical innovation in all areas of vehicle development. Our Engineering Centre in Gaydon is at the forefront of this and employs thousands of engineers and technologists from across the county."

Les Ratcliffe, Head of Community Relations, Jaguar Land Rover, www.jaguarlandrover.com



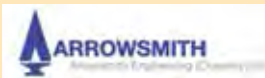
Aerospace

"The sector is one of the UK's largest exporters adding around £2.8 billion annually to the UK balance of trade" Source UKTI

Aerospace businesses based in Coventry and Warwickshire play a major part in the industry's crucial supply chain. They are supported by the Manufacturing Technology Centre (MTC) and by the area's two excellent universities, both of which offer considerable experience in the field. A number of high - profile organisations work together collaboratively such as the Coventry and Warwickshire Aerospace Forum, to open up new markets: the area is also home to the Midlands Aerospace Alliance. Coventry and Warwickshire is home to Rolls Royce, Arrowsmith Engineering, JJ Churchill, Lisi Aerospace alongside companies in the supply chain which include AMFIN, NP Aerospace and ANT Industries.

Since Coventry-born Sir Frank Whittle invented the jet engine, Coventry has played a significant part in the production of aerospace components for the world's second largest aerospace industry in the United Kingdom.

Coventry is home to the UK's largest aerospace cluster (the Midlands Aerospace Alliance), two National Catapult Centres providing aerospace research, two top class engineering universities providing world-class engineering graduates and arguably some of the best engineering companies in the country.



Arrowsmith Engineering have been part of the successful aerospace industry in Coventry and Warwickshire since 1967.

We at Arrowsmith believe there is no better region to be in an aerospace supply chain and this has assisted Arrowsmith's continued growth and success.

Energy

"The UK leads the world in assessing carbon footprints and giving strategic advice on removing carbon from an entire supply chain" Source UKTI

A revitalised and restyled LEP Energy Business Group is recognition of the crucial role that this sector is playing and will continue to play in the economic development of this area. The sector is second only to the automotive sector as an industrial player. Its focus on energy management and local supply brings real commercial advantage to investing and new businesses. The sector is key to creating resilient urban environments capable of dealing positively with the effects of population growth, climate change, lifestyle change, resource depletion and economic stress. Local businesses include Severn Trent, Calor Gas, National Grid, E-on, Baxi and Alstom.

Automotive

"Vehicles are now established as the UK's number one manufactured export" Source UKTI

Coventry and Warwickshire is internationally recognised as a major automotive design and engineering centre, and is a key supplier of vehicle components and home to the global headquarters of Jaguar Land Rover and the Jaguar Land Rover Engineering Centre. More recently, the area has become a leader in the development, understanding and deployment of electric vehicles and intelligent mobility. We are proud to have world-renowned companies such as Tata Motors, Aston Martin, Dennis Eagle, BMW, Peugeot Citroën, Geely and Volvo in the region, along with being at the heart of the automotive supply chain, with Brose, Bosch, Unipart, Lear and Delphi Lockheed in the area.

Low Carbon Vehicles

The region is widely recognised as an established leader in the design, development, deployment and understanding of low carbon vehicles. The work has been a natural progression from the area's expertise in vehicle engineering. The area is home to a number of prestigious businesses and support organisations operating in the fields of electric, electric hybrid, fuel cells, hydrogen power systems and light weight materials. Coventry has a network of publicly available third generation electric vehicle points and boasts the UK's first all-electric bus service.

The extensive R&D capability and capacity makes Coventry and Warwickshire the ideal test-bed for low carbon transport technologies.

CABLED – Coventry and Warwickshire Low Emissions Demonstrator project delivered 110 ultra low carbon vehicles across Birmingham and Coventry over a two year period. The scale of the project also provided a number of electric charging stations and a hydrogen fuelling station at Coventry University for those vehicles.

Plugged-In Midlands is combining the roll-out of electric vehicle infrastructure with the development of regional capabilities associated with the electrification of road transport. Jointly managed by Cenex and Central Technology belt, the project is one of eight 'Plugged-in Places' projects supported by the Office for Low Emission Vehicles (OLEV).



Intelligent Mobility

Coventry and Warwickshire is at the forefront of the developing Intelligent Transport Systems sector, also known as Telematics, Infotainment or Mobility. The firms in this sector are adapting technologies from elsewhere for application in designing transport networks as systems of the future. From remotely operated vehicles to developments with iPad applications and diagnostics, the sub-region has a global presence in this sector with world class research. The area is home to MIRA, Volvo and Coventry University who are all at the forefront of this new technology.



Professional and Financial Services

The Department for Business Innovation and Skills' (BIS) strategy for growth define this sector as a global success story. Coventry and Warwickshire is home to nearly 12,000 companies within the Professional and Business Services sector including Barclays Bank, Coventry Building Society, Santander, Yorkshire Bank, Allied Irish Bank, Handelsbanken, HSBC and the Royal Institute of Chartered Surveyors (RICS).

Further growth is expected in the next 5-10 years with the development of Friargate - a £59 million professional quarter located in the heart of Coventry and next to Coventry mainline railway station.

Digital and Creative Industries



Coventry and Warwickshire has a vibrant digital and creative sector, focusing on design, software development, gaming, film making, theatre, and digital infrastructure.

The Games Development industry is worth £1b to the UK economy and employs some of the UK's most creative minds in producing a range of console and mobile platform games. Warwickshire is home to the third largest games development cluster in the UK. The towns of Warwick, Leamington Spa and Southam make up the cluster known as Silicon Spa, with over 25 studios directly employing some 1,200 people; it makes up 10% of the UK's industry total. Local names include Codemasters, Playground Games, Exient and Sega Hardlight.

The Serious Games Institute, located in Coventry, is an International Centre for Excellence in Serious Games such as applied research, business engagement and study. Its aim is to enable and facilitate the growth of serious games, the virtual world and related industries. The creation of the Institute originated from the regional strength in the global electronic games' market through local companies, and pioneering work in the application of electronic games to serious business applications. Serious games involve the use of electronic games technologies and methodologies for primary purposes other than entertainment, including e-learning, simulation, social networking and opinion shaping.



"Codemasters has been at the heart of the Warwickshire region's ever-growing digital entertainment cluster for over 25 years. The company employs some 400 people in the area to create and publish award-winning video games, including the official series of Formula One games, which are played all over the world."

Warwickshire and Coventry is now home to an incredibly vibrant cluster of digital businesses, providing a real community of talented entertainment creators in the region. In a 15 mile radius of Leamington Spa alone it has created some 1,000 jobs, representing around 10% of the UK's video game industry.

For all the team at Codemasters, being based in the heart of Warwickshire with great road and transport links, means there's a great range of options as to where to live and commute from, inside or outside the county."

Richard Eddy, Director, Codemasters
www.codemasters.com



Unleash your potential with WBS

Warwick Business School offers a wide range of Executive Education programmes that will help your business, whether large or small, reach its true potential. If you're looking to further your own career, or you're an organisation looking to develop your people, we have a range of flexible study options to choose from, to help your business stay ahead of the pack.

- ⌘ **Graduate Diploma in Applied Management**
Develop core business and management skills, learning the latest business theories and how to apply them to your day-to-day work.
- ⌘ **Business Innovation and Growth Programme**
A series of one-day workshops designed to equip SMEs with essential tools for high growth.
- ⌘ **Leading Wisely**
A two-day course that explores modern leadership using MBA knowledge to help you make decisions in today's challenging business environment.
- ⌘ **Postgraduate Awards**
We offer shorter accredited courses and online options for flexible study.
- ⌘ **Learning for business**
We provide practical learning opportunities for businesses, with development opportunities ranging from short sessions to intensive on-going development interventions.
- ⌘ **Bespoke programmes**
If you have specific development needs for your organisation, then we can work with you to develop a bespoke programme tailored to your needs.

Why Warwick?

At Warwick Business School, we believe in proactive and applied learning. We use our latest research and thinking to support your own development through practical application in your own workplace.

To find out more about how Warwick Business School can make a difference to you and your business, contact us today.



- 📞 +44 (0)24 7652 4395
- ✉ execqueries@wbs.ac.uk
- 🌐 wbs.ac.uk/go/exec15

THE UNIVERSITY OF
WARWICK

we've got the
BIG
deal

from only
£150
per year*



When your business needs expert support one membership covers all this...

Legal and Tax Protection Insurance, Legal Documents, Legal Information Online, Legal Services, Legal and Tax Advice Line, Health and Safety Information, Commercial Insurance Helpline, FSB Care, with access to more Member Benefits.

Find out more at www.fsb.org.uk/benefits or phone Customer Services on 0808 20 20 888



Follow the FSB on Facebook, Twitter and Google+ to find out the latest news and advice



We think small Business Is Great

*Price includes a £30 registration fee for the first year only.



Coventry & Warwickshire
Chamber of
Commerce
The Ultimate Business Network

02476 654321

www.cw-chamber.co.uk

Coventry & Warwickshire is a thriving business location and the Chamber of Commerce is an important part of this business community.

Our strength of membership and range of services makes us a leading business support organisation.

Conference Hire

Located within the heart of Coventry our conference & meeting rooms offer the right place to hold a meeting, training workshop, product launch and exam. We offer flexible and tailored packages with excellent customer service.

- 2 conference rooms / 3 meeting rooms
- Laptops, projectors, screens
- High-speed Wi-Fi
- Refreshments and buffets
- Free car parking
- Disabled access
- Excellent transport links

from
£18
per delegate

Join Today ... and expand your business potential

7 BIG reasons to join us:



Keeping You Informed



Cost Savings



Increase Your Business



Networking & Events



International Trade



Protect Your Business



Chamber Services

Coventry and Warwickshire Chamber of Commerce,
Chamber House, Innovation Village, Cheetah Road, Coventry CV1 2TL



ENJOY RUGBY 2015



#BIRTHPLACEOFTHEGAME



IN 2015, THE RUGBY WORLD CUP COMES HOME

When William Webb Ellis caught a football at Rugby School in 1823 and ran with it, a game was born. Now it's a global sport, played and enjoyed by millions around the world. In 2015, rugby returns to its roots. England hosts the Rugby World Cup, with 20 teams competing for the sport's biggest prize – the Webb Ellis Cup. The game may have changed since William Webb Ellis created history, but its heart remains in Rugby. It's the reason thousands of rugby fans flock to Rugby each year – a pilgrimage to the birthplace of the game.

Visitors can discover the origins of the game, the history of its players, and the enduring impact Rugby has on the sport which bears its name. You can take a trip to 'The Close' at Rugby School, the hallowed turf where it all began – the day William Webb Ellis turned a game of football into a game of rugby football.

In 2015, rugby's coming home. Come to Rugby to discover where it all began.

2015 Rugby Festival of Culture

art | literature | music | dance | food | drink

A two week festival in Rugby Town during July 2015

More information from Rugby Visitor Centre
t: 01788 533217 e: visitor.centre@rugby.gov.uk

www.rugbyfestivalofculture.co.uk

RUGBY Real Ale Trail
DRINK LOCAL

RUGBY Food & Drink Festival 2015
& REAL ALE TRAIL
September 2015

Farmers Market ★ Food Fayre ★ Pop-up Kitchen

www.rugbyfoodanddrinkfestival.co.uk



rugbyvisitorcentre

www.enjoyrugby.co.uk

EnjoyRugby



Delivering focused industry expertise in Coventry and Warwickshire

Barclays works with a range of businesses across Coventry and Warwickshire.

Committed to supporting economic growth

We believe this insight is the difference that helps us give our clients the support they need to achieve their goals. We are dedicated to lending to businesses to encourage economic growth. The Barclays Relationship Directors are industry specialists who have worked in the area for many years – this is their community, where they have built up a network of relationships with business professionals, whose knowledge and expertise are at clients' disposal. Our industry specialism has seen Barclays partner with local businesses, ranging from accountants and construction companies to schools and professional services.

With the recent growth in the economy, a more optimistic outlook is emerging among businesses. Creating a new landscape for financiers and companies alike. Now the UK is one of the fastest growing economies in the west, many companies are looking to expand, especially to new markets. A prime example of this is Lawton Tubes, based in Coventry and are the UK's leading independent manufacturer and distributor of copper tube. Currently managed by fourth generation Lawtons and until recently had never expanded overseas.

Whether your business is looking to expand or diversify, Barclays is committed to ensuring all our clients get the support that's right for them.



“Lawton Tubes are a family business and believe it's important to keep diversifying whether with new products or expanding the business overseas. Barclays have supported us even at the conceptual stages.”

Robert Lawton, Business Development Director, Lawton Tubes
www.lawtontubes.co.uk



Keith Boxley
Relationship Director
M: 07766 364613*
E: keith.boxley@barclays.com



Richard Fray
Relationship Director
M: 07775 552890*
E: richard.fray@barclays.com

To find out how Barclays can support your business aspirations,
please contact Keith or Richard.

* Please note: this is a mobile phone number and calls will be charged in accordance with your mobile tariff.

Barclays is a trading name of Barclays Bank PLC and its subsidiaries. Barclays Bank PLC is authorised by the Prudential Regulation Authority and regulated by the Financial Conduct Authority and the Prudential Regulation Authority (Financial Services Register No. 122702). Registered in England. Registered number is 1026167 with registered office at 1 Churchill Place, London E14 5HP. Item ref: BM406329. June 2014.

AVAILABLE TO LET

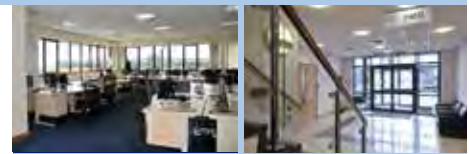
CROSS POINT BUSINESS PARK COVENTRY • CV2 2UU



COOPER HOUSE
25,250 sq ft (2,345 sq m)



FLETCHER HOUSE
9,984 sq ft (927.56 sq m)



- Air conditioned offices
- Situated at junction 2 of the M6 motorway
- Sub divisible from 12,250 sq ft
- Double height reception
- 8 person passenger lift
- 136 car parking spaces

For further information on both properties, contact joint agents:



NICK WILLIAMS
nwilliams@savills.com



ROBERT RAE
rrae@nrsproperty.co.uk

Immediately available subject to refurbishment

- Air conditioned offices
- Situated at junction 2 of the M6 motorway
- Sub divisible from 4,691 sq ft
- Two-storey self contained unit
- Carpeted throughout
- 56 car parking spaces

3034044



Your business deserves the best

see what we can do for you.

Band Hatton Button's wide range of commercial clients ranges from sole traders and partnerships, through to small and medium-sized companies, to large public companies and other organisations. We understand that, in a competitive world, businesses of all sizes need to have access to the highest standard of legal advice, delivered promptly and without jargon in order to enable them to form their own decisions.

Band Hatton Button
25 Warwick Road
Coventry
CV1 2EZ

Contact Us

024 7663 2121
info@bandhattonbutton.com
bandhattonbutton.com
twitter.com/bhblegal

3034283

It's How You Make It

The average company in the UK spends £6,800 on research and development - in Coventry and Warwickshire that figure stands at £15,000, showing that local businesses have the strength and conviction to invest in themselves and their products. They understand it's how to stay ahead of the competition. The area also boasts one of the highest rates of international patenting in the UK, showing how innovation is at the forefront of day to day business in Coventry and Warwickshire.

Manufacturing Technology Centre

The Manufacturing Technology Centre (MTC) was designed with the objective of bridging the gap between research and development and real-world applications. Based in Ansty Park on the border of Coventry and Warwickshire, the purpose-built facility is one of the largest public sector investments in manufacturing for many years and has been supported by major organisations including Rolls Royce.

The MTC provides a high quality environment for the development and demonstration of new technologies on an industrial scale, providing a unique opportunity for manufacturers to develop new and innovative processes and technologies and develop novel solutions in a low risk environment.

MTC specialises in a range of manufacturing processes that are particularly useful to the high value manufacturing sector:

- Net shape manufacturing
- Intelligent automation
- Advanced tooling and fixturing
- Electronics manufacturing
- Computerised engineering (modelling and simulation)
- High integrity fabrication (HIF).
- Metrology and non-destructive testing (NDT)

MIRA

MIRA is a highly customer-focused world class independent vehicle engineering consultancy. It provides ground-breaking engineering innovations and unrivalled testing capability, with globally significant research and development. The organisation is a leader in automotive research, including the intelligent transport sector. It is at an advanced stage of developing a new technology park which will provide a platform for the rapid development of bespoke R&D centres from start-ups to European operations.



Jaguar Land Rover

Jaguar Land Rover is the UK's largest automotive manufacturing business, built around two iconic British car brands: Land Rover, the world's leading manufacturer of premium all-wheel drive vehicles, and Jaguar, one of the world's premier luxury sports saloon and sports car marques.

All of their cars are designed in Coventry and Warwickshire and engineered in Britain. They have ambitious plans for global growth, the heart of the business remains in the UK, supporting more than 190,000 UK jobs through the supply chain, dealer network and wider economy.

They have invested billions of pounds in state-of-the-art production, research and development facilities and are the biggest UK investor in R&D in the manufacturing sector, ahead of British Aerospace and Rolls-Royce. Jaguar Land Rover is listed in the global top 100 for R&D spend. This investment, along with their support of local communities and encouragement to get young people to seek jobs in engineering has led to Jaguar Land Rover winning the Responsible Business of the Year Award – an accolade they take great pride in achieving.

Coventry University

Recognised internationally for the world-leading calibre of its engineering and design graduates, as well as its focus on multidisciplinary applied research, the university is known for its expertise in design, health and digital media, as well as automotive engineering with close links to the industry. The university has recently been rated 'Modern University of the Year' by *The Times* and *The Sunday Times Good University Guide* 2014.

Coventry University perfectly fuses education and business, being home to:

- The Centre of Excellence for Product and Automotive Design
- Low Carbon Vehicles Grand Challenge Initiative
- Automotive Engineering Applied Research Group
- Serious Games Institute
- Coventry University Enterprises – CUE - the corporate arm of the university, aiming to bring together its teaching and research with the corporate sector



University of Warwick

One of the UK's top 10 universities, Warwick is acknowledged for excellence in research, teaching and innovation. The university has developed a variety of facilities which bring business and education together to create a unique resource for research and development. With 4,000 graduates a year it's easy to see why it is the most highly-targeted UK university by top employers and held in such high regard.

WMG

Warwick Manufacturing Group (WMG) was formed to invigorate manufacturing by improving the competitiveness of organisations through value-added innovation, new technologies and skills development. WMG brings academic rigour to industrial and organisational practices.

At the university, WMG is home to:

- International Manufacturing Centre - which is the HQ and showcases Engineering Materials R&D
- Automotive Composite Research Centre - will provide local industry with hands-on technical expertise and equipment to develop its manufacturing capability for polymeric composites.
- Energy Innovation Centre - which is a one-stop-shop for the development of new battery chemistries and includes the Vehicle Energy Facility and Battery Materials Scale-up Pilot Line International Institute for Nanocomposites Manufacturing - which will be the first of its kind in the world
- International Institute for Product and Service Innovation - which is dedicated to SMEs with R&D
- National Automotive Innovation Campus - which will open in 2016 and will provide state-of-the-art environment for collaborative automotive research and development activities
- International Digital Laboratory
- Engineering Management Building

Warwick Business School

The university's Warwick Business School (WBS) offers first-class graduates, research and development capabilities, bespoke staff development, and practical learning for businesses. WBS is ranked 7th in the world by Forbes for its MBA.



"There is a real opportunity for growth in Coventry and Warwickshire. But it will require scientists, entrepreneurs and

business leaders to help support this growth and bridge the academic-industrial divide. We are fortunate to have the University of Warwick, one of the top UK universities, in our county and WMG undertakes collaborative R&D with companies all over the world, as well as being heavily involved in the local industry sector. It is a myth that it is only large companies who can engage in R&D, at WMG we work with SMEs through to global companies. Through technology transfer any company can work with our academic experts to create new processes, products or services. It's by working together that we can develop and innovate internationally competitive products of the future."

**Professor Lord Bhattacharyya, CBE,
Chairman of WMG, University of Warwick
www.warwick.ac.uk**



Managed Business Centres in Warwickshire

Centenary Business Centre, Nuneaton

Offers a great mix of office and light industrial workspace, housing a total of 63 units and is already home to a diverse range of successful businesses. The centre is perfect for small/start-up and established businesses alike and with a flexible 28-day licence, as well as a team of friendly professional staff - make this an ideal venue with excellent motorway and transport network links for your business requirements.

Come and join our business community.....simply call **024 7664 1399** for further details.

Studio 43

Studio 43 is a 'state of the art' fully equipped photography studio available to hire by the hour or day, offering a large creative space with changing rooms, make up stations and a green screen for videography. Phone **024 7674 1399**.

The Meeting Point

The Meeting Point is a large versatile space for your group requirements with complimentary tea and coffee. Phone 024 7664 1399.

Sir Frank Whittle Business Centre, Rugby

Close to J1 of the M1, this centre offers a warm welcome and is home to a mix of business in office and light industrial units. For further information call **01788 551500**.

Eliot Park Innovation Centre, Nuneaton

Built in 2005, Eliot Park is the most recent addition to the County Council's portfolio. This award winning environmentally friendly building offers flexible high spec with business friendly terms, ideally situated off J3 if the M6 the on-site cafe 'The Deli' is for your convenience and offers a relaxing area to un-wind. Offering a range of services for your business, including super fast broad band. Phone **024 7679 6400** for details.

First Office, Eliot Park Innovation Centre

In addition to our larger units, we have recently launched First Office, a unique opportunity for you to benefit from the prestige of Eliot Park Innovation Centre, without the larger overheads, guaranteed a dedicated desk within a shared office with lockable storage, your own telephone number and access to all the facilities of the building. Phone **024 7679 6400**.

Sir Frank Whittle

Business Centre: 01788 551500

Centenary Business Centres: 024 7664 1399

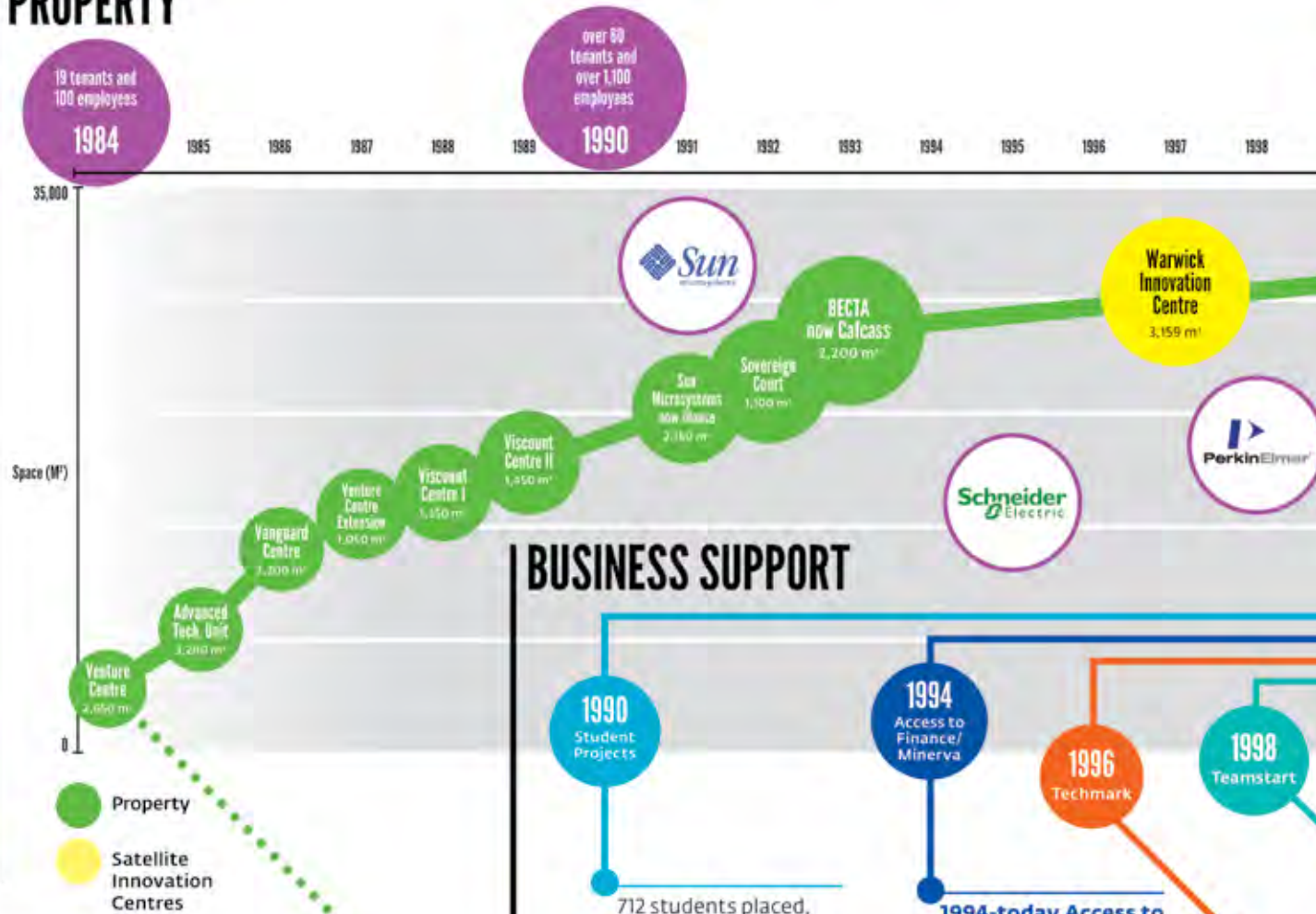
Eliot Park Innovation Centre: 024 7679 6400



- 24/7 access
- Franking, colour copying, scanning
- Fully manned reception area
- CCTV surveillance
- Range of lifting equipment (not Eliot Park)
- Free parking
- Small business networking opportunities
- Meeting room for hire with Wi-Fi

30 YEARS OF INNOVATION AND GROWTH

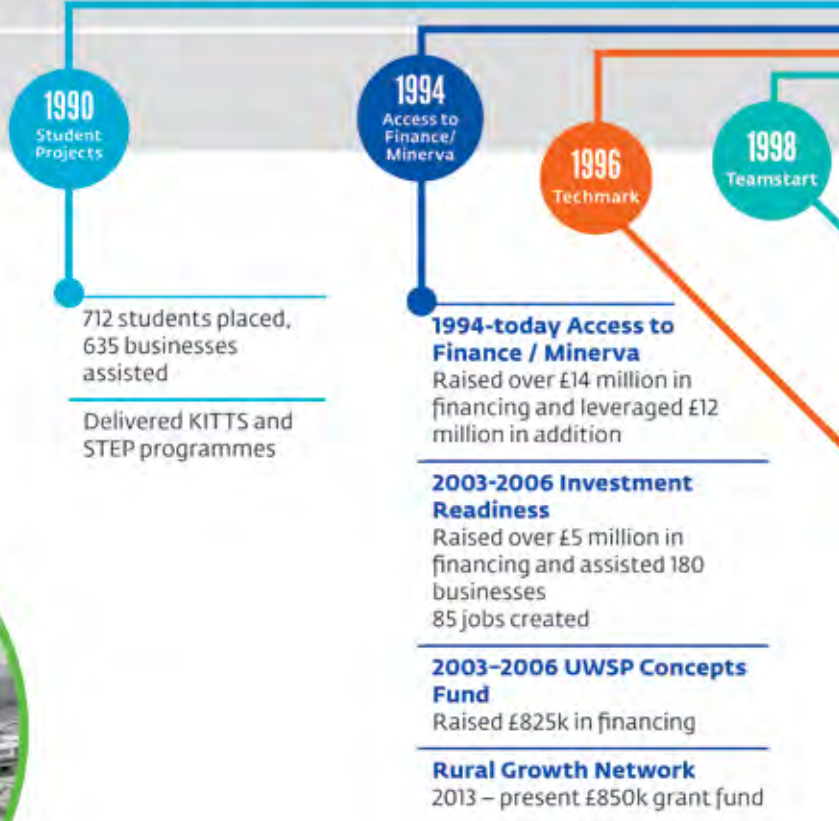
PROPERTY



● Property
● Satellite Innovation Centres



BUSINESS SUPPORT



1990

1994

1996

1998

712 students placed, 635 businesses assisted
Delivered KITTS and STEP programmes

1994-today Access to Finance / Minerva
Raised over £14 million in financing and leveraged £12 million in addition

2003-2006 Investment Readiness
Raised over £5 million in financing and assisted 180 businesses
85 jobs created

2003-2006 UWSP Concepts Fund
Raised £825k in financing

Rural Growth Network
2013 – present £850k grant fund



University of Warwick Science Park



2007 Business Incubation

- Business creation process for experienced venturers
- Over 100 companies created and over 200 venturers trained
- Delivered Mustard Teamstart, Teamstart SG and Faststart
- Over 700 businesses assisted
- 1999-2001 SME Export Initiative**
Helped over 50 companies export
- 2000-2008 Clusters**
Over 130 businesses improved and over 10 Industry Clusters formed
- 2006-2011 Bridge to Growth**
Over 100 foreign-owned companies attracted to the UK
- 2010-11 Growing Success Program (export marketing)**
Over 25 businesses helped to export
- 2011-present UK Market Access Program**
Over 120 foreign-owned companies assisted

2009 Strategic Consultancy

- Business Transformation Service, Business Recovery Service, Coaching for High Growth
- Assisted over 85 businesses

2007 Ignite

- Over 500 businesses assisted
- Over 100 businesses incubated
- Over 150 jobs created

2009-2011 Advantage Proof of Concept Fund

- £5.8 million grant fund
- 148 jobs created

University of Warwick Science Park
The Venture Centre,
Sir William Lyons Road,
Coventry, CV4 7EZ
Telephone: +44 (0)24 7632 3000
Email: uwsp@uwsp.co.uk
www.warwicksciencepark.co.uk

Developing a Workforce for the Future

The region is emerging from the recession, fuelled by increasing demand for the services and products offered by local companies. To meet this demand, many businesses across Coventry and Warwickshire are looking to recruit - some of them for the first time in many years. In terms of the local labour supply, Coventry and Warwickshire have no shortage of qualified individuals.

Recruitment can be a time-consuming and resource-intensive task, especially for small and medium enterprises (SMEs) without human resources staff, but get it right and your business will reap the rewards and flourish. As a business within Coventry and Warwickshire you will be able to access a variety of support packages tailored to your business to ensure you can find the right people to expand your workforce, or develop the right skill set to match your business need.

The Employer Hub

The Employer Hub provides a comprehensive recruitment and training service, designed to meet the needs of employers. Working with key local agencies - each a specialist within the training and employment field - The Employer Hub offers a service to businesses that is without multi-agency confusion. In being a single point of contact, The Employer Hub simplifies the process of recruitment and training for local businesses.

Some of the services The Employer Hub can provide to your business include:

- Information and advice regarding the local labour market
- Support through the entire recruitment process; from job-listing to interview
- Screening and short-listing of candidates
- Interview support and free use of interview facilities
- On-going support for you and your new recruit
- Skills, training and apprenticeship advice
- Advice and access to grants and financial incentives

The Employer Hub's recruitment services are free of charge and the recruitment and training solutions are tailored to the needs of each business. The Employer Hub works in tandem with local universities and colleges, providing businesses with access to high-calibre candidates with the knowledge, experience and skills to fill vacancies in all sectors.

For more information on The Employer Hub, visit www.coventry.gov.uk or contact 024 7683 1278 or e-mail alex.dickson@coventry.gov.uk

Apprenticeships

An apprenticeship is a competence-based skill development programme, designed and endorsed by employers for their employees, which combines independently accredited work-based learning, off the job training and relevant experience in the job. They can be used to train both new and existing employees and will last a minimum of one year and up to four depending on the framework being undertaken.



Apprenticeships are available at Intermediate, Advanced and Higher (degree) level, covering more than 170 industries and 1,500 job roles. There are currently over 150,000 employers offering apprenticeships in more than 200,000 locations across England.

Apprentices are employed for a minimum of 30 hours a week and for at least one year and are paid an average of £170 a week; apprenticeships have their own minimum wage which went up to £2.73 an hour in October 2014. If you are a business employing up to 1,000 employees and interested in recruiting a young apprentice you could be eligible to receive a £1,500 Government grant.

Traineeships

Traineeships are workplace learning opportunities offered to young people possessing fewer qualifications. Like apprenticeships, traineeships are delivered in partnership with local training providers and incorporate a combination of workplace learning and taught courses. Unlike apprenticeships, traineeships are unpaid and typically last between six weeks and five months. Following the completion of a traineeship, trainees will possess the skills, qualifications and experience to continue on to an apprenticeship or directly into full-time employment.

For more information about apprenticeships or traineeships and to talk to someone about recruiting or general support, please contact the Apprenticeship Hub:

www.warwickshire.gov.uk/getanapprentice
Email: apprentice@warwickshire.gov.uk
Telephone: 01926 412649

Young Person's Employment Placement Scheme (YPEPS)

Coventry City Council believes in the talents of Coventry's youth. This is why the Young Person's Employment Placement Scheme (YPEPS) was created. The YPEP scheme works in partnership with local businesses to organise and offer six-month paid work placements to young people. Coventry City Council will make a generous salary contribution for the length of this placement as an incentive to the employer.



Founded in 1999, Penso design and manufacture vehicle components and niche vehicles, such as four-wheel steering Mercedes Vito taxis, popular in Europe.

In 2008, Penso employed 36 personnel, with a turnover of £3.5m. National and international demand for their products means that, by 2016, staffing will increase to 170 personnel, with a turnover of £20m.

To fill these jobs, Penso have not only championed the idea of recruiting locally, but are also investing in the future of their business by providing in-house training for young recruits.

The process of taking on a YPEPS placement does not require any extensive time or resource on the part of the employer. Coventry City Council's Youth Services team can assist in the design of a job description and will shortlist a number of suitable candidates for the employer to choose from. Following the completion of the placement, we are confident that the employer will have seen enough to justify offering the placement an extended contract or to recommend the young person to another employer if no internal vacancy exists.

For more information contact David Kersey
By phone: 024 7683 4801
By e-mail: david.kersey@coventry.gov.uk



Keepmoat are a market leader in community regeneration and housing.

In 2013 they employed Jade on a six month YPEPS placement.

"Jade showed a level of commitment that exceeded anyone we have recently employed...she quickly became a very popular member of the team."

After her placement, Jade began to earn a qualification in plumbing through an apprenticeship. As a result, Jade is developing her skills and Keepmoat continue to benefit from her professional attitude and determination.

Young people can rejuvenate a stagnant workforce and bring new ideas into a business. In employing young people, businesses are investing in their futures.

Advanced Manufacturing and Engineering firms benefit from training workshops

Business executives from engineering and manufacturing companies across Warwickshire have highly praised a breakfast event hosted by Midlands Professional Development.

The event staged a number of taster workshops, giving companies an insight to the benefits and importance of professional training for their employees. Guests from companies such as Futura Design, Coventry Manufacturing and Expert Tooling Automation were given the opportunity to explore the extensive range of training courses on offer.

Many guests were inspired by Peter Hucker, MD of Daly Engineering in Coventry, who gave the history and description of how his business has become stronger since working with Midlands Professional Development.

"Our people are our greatest asset and Daly's directors recognise and value their continuing contribution to our success", says Peter. "One of the benefits of working with MPD is their flexibility to meet our needs. By utilising their training and funding opportunities we saved £16,000 in training costs. We would have no hesitation in recommending them."

MPD work in partnership with PERA training, delivering a European Social Fund project entitled Skills Support for the Workforce. The scheme allows employers to up-skill their workforce, and is fully funded by the ESF. Clare McKenzie, Associate Director of MPD says: *"We were very pleased with the interest shown both in the event and the Skills Support for the Workforce project. We're looking forward to working with such a positive range of companies."*

For more information on the Skills Support for the Workforce Project, contact 024 7679 6422 or email info@midspd.co.uk

YOUR PARTNER FOR A SKILLED WORKFORCE

CORPORATE TRAINING

Charterhouse, our corporate training arm, offers a range of NVQs and customisable courses. It's the cost-effective, local solution to career development and ensuring the optimum running of your organisation. Courses include:

- Accredited Management Development
- Assessor and Verifier Qualifications
- Management and Business Skills
- Health and Safety
- First Aid
- IT
- Mentoring
- Food Safety
- Project Management

Most training available on campus or at your premises. Skills Support for the Workforce supports the development of your employees to improve their existing skills and knowledge through work-based learning including Mentoring, Team Leading & Management. It is fully funded by the European Social Fund (ESF) so there is no cost to your business. We can also offer free training in specialist areas such as welding and BIT. Contact us for more information.

**City College Coventry,
Swanswell Street,
Coventry, CV1 5DG**

Tel: 024 7679 1000

Freephone: 0800 616 202

info@covcollege.ac.uk

www.covcollege.ac.uk

PROFESSIONAL STUDIES COURSES

Recognised and accredited across a range of industry bodies, we provide career professionals with knowledge and skills needed to perform and progress.

- Accounting and Purchasing and Supply
- Management (Including ICM and CIPS)
- Business and Management (including CMI and PRINCE2)
- Construction (CIOB)
- Health and Safety (NEBOSH)
- Law (ILEX)
- Personnel (CIPD)

APPRENTICESHIPS

Skills shortage? Tackle it with apprentices from the College. Apprenticeships offer employers a cost-effective route to employing skilled and dedicated staff. We are the largest FE provider in the city and we've been providing apprenticeships for more than 30 years.

We'll help advertise, recruit and select a suitable apprentice. We'll support them throughout their training with modern facilities and regular appraisals. You'll provide on-the-job experience and training, helping to preserve skills and shaping your future workforce to meet your needs.

- Accounting
- Administration
- Childcare
- Construction Crafts
- Customer Service
- Hairdressing
- Health & Social Care
- Electrical Installation
- Engineering
- Light Vehicle
- Motor Vehicle
- Plumbing
- Public Service Vehicles (PSV)
- Team Leading & Management
- Telecoms
- Warehousing

Employers who use apprentices describe it as "A great deal for both sides". To find out more call Cynthia Jacox on 024 7679 1125 or email apprenticeships@covcollege.ac.uk

Keep your business one step ahead of the competition!

Training solutions at North Warwickshire & Hinckley College will equip your staff with the skills they need to help your business thrive.

Why choose us?

- We offer courses across a range of industries, such as Engineering, Manufacturing and Creative Arts
- We work with over 1,000 local, regional and national employers
- Close relationships with local enterprise partnerships in the East and West Midlands which enable us to tailor our offer to best match the demands of industry
- Wide range of industry-spec training from short courses to NVQs, delivered in the workplace

To find out how we can help you to increase your productivity and bottom line, contact our Business Development Team:

Call 024 7624 3222

Email: business.development@nwhc.ac.uk

Visit www.nwhc.ac.uk



We can help businesses like yours to succeed

North Warwickshire & Hinckley College provides totally flexible training solutions that impact on business performance.

We are a trusted provider to a wide range of businesses throughout Coventry and Warwickshire including MIRA, Triumph, Toyota Material Handling, Nuffield Health, George Eliot Hospital, Manufacturing Technology Centre, Toni & Guy, Twycross Zoo and Shapes Nursery.

What do we offer? We can provide Apprenticeships, Traineeships, distance learning and short courses. We also provide vocational qualifications delivered in the workplace and bespoke training packages developed in conjunction with you, to meet the needs of your business. Our expertise provides support to organisations across a wide range of sectors, including Health & Social Care, Motor Vehicle, Business Administration, Warehouse and Logistics and Management.

So why choose us?

Training focused on the specific needs and skills gaps within your business means that results are seen quickly and additional skills impact on efficiency and performance straightaway.

Bringing fresh ideas and enthusiasm into the business in the shape of an Apprentice means that you have the opportunity to 'grow your own'. You can develop the staff and skills needed to ensure a fully trained, competent workforce with the skills and qualifications you need now and in the future.

We can provide training and support to all sizes of business – and work with many SMEs to enable them to take advantage of apprenticeships and other opportunities.

Don't just take our word for it - see what our customers have to say:

"Arrowsmith are a first tier Aerospace manufacturer supplying the World's 2nd largest Aerospace industry in the UK.

For this we need to train world class engineers and this is why we employ local apprentices and graduates.

Warwickshire and Coventry have a history of training world class engineers and our local colleges and Universities are working with industry to continue this proud heritage."

To find out how we can help you to increase your productivity and bottom line, contact our Business Development Team:

Call 024 7624 3222

Email business.development@nwhc.ac.uk

Visit www.nwhc.ac.uk



**DO YOU NEED TO RECRUIT NEW PEOPLE?
ARE YOU LOOKING TO UPSKILL
OR TRAIN YOUR STAFF?**



There has never been a better time to EMPLOY AN APPRENTICE!

GROW YOUR BUSINESS WITH APPRENTICESHIPS



77% of employers believe Apprenticeships make them more competitive.

- ▶ Business Administration & IT
- ▶ Customer Service & Retail
- ▶ Leadership & Management
- ▶ Engineering
- ▶ Electrotechnology
- ▶ Motor Vehicle
- ▶ Childcare
- ▶ Health & Social Care
- ▶ Hospitality & Catering
- ▶ Construction
- ▶ Creative & Cultural
- ▶ Performing Arts



Interested in employing an apprentice?
Call us on **01789 266 245** or visit
www.stratford.ac.uk to find out more.

3034064



**WARWICKSHIRE
COLLEGE
GROUP**

Leading YOU to success

Train with the best to secure your business growth

Our industry experts can:

- tackle your skill shortages
- provide professional and supportive advice
- offer specialist training and flexible courses
- show a clear return on your training investment
- introduce you to ambitious, business-minded apprentices

WE'RE WORKING WITH
1,500
EMPLOYERS
NATIONALLY!

For high-quality training and business support call **0300 456 0049** or employers@warkscol.ac.uk

www.warwickshire.ac.uk/employers



ROYAL LEAMINGTON SPA COLLEGE RUGBY COLLEGE MORETON MORRELL COLLEGE PERSHORE COLLEGE HENLEY-IN-ARDEN COLLEGE WARWICK TRIDENT COLLEGE

3034050

Jaguar Land Rover

Jaguar Land Rover is the UK's largest automotive manufacturing business, built around two iconic British car brands: Land Rover, the world's leading manufacturer of premium all-wheel drive vehicles, and Jaguar, one of the world's premier luxury sports saloon and sports car marques.

All of their cars are designed in Coventry and Warwickshire and engineered in Britain. They have ambitious plans for global growth, the heart of the business remains in the UK, supporting more than 190,000 UK jobs through the supply chain, dealer network and wider economy.

They have invested billions of pounds in state-of-the-art production, research and development facilities and are the biggest UK investor in R&D in the manufacturing sector, ahead of British Aerospace and Rolls-Royce. Jaguar Land Rover is listed in the global top 100 for R&D spend. This investment, along with their support of local communities and encouragement to get young people to seek jobs in engineering has led to Jaguar Land Rover winning the Responsible Business of the Year Award – an accolade they take great pride in achieving.

Coventry University

Recognised internationally for the world-leading calibre of its engineering and design graduates, as well as its focus on multidisciplinary applied research, the university is known for its expertise in design, health and digital media, as well as automotive engineering with close links to the industry. The university has recently been rated 'Modern University of the Year' by *The Times* and *The Sunday Times Good University Guide* 2014.

Coventry University perfectly fuses education and business, being home to:

- The Centre of Excellence for Product and Automotive Design
- Low Carbon Vehicles Grand Challenge Initiative
- Automotive Engineering Applied Research Group
- Serious Games Institute
- Coventry University Enterprises – CUE - the corporate arm of the university, aiming to bring together its teaching and research with the corporate sector



University of Warwick

One of the UK's top 10 universities, Warwick is acknowledged for excellence in research, teaching and innovation. The university has developed a variety of facilities which bring business and education together to create a unique resource for research and development. With 4,000 graduates a year it's easy to see why it is the most highly-targeted UK university by top employers and held in such high regard.

WMG

Warwick Manufacturing Group (WMG) was formed to invigorate manufacturing by improving the competitiveness of organisations through value-added innovation, new technologies and skills development. WMG brings academic rigour to industrial and organisational practices.

At the university, WMG is home to:

- International Manufacturing Centre - which is the HQ and showcases Engineering Materials R&D
- Automotive Composite Research Centre - will provide local industry with hands-on technical expertise and equipment to develop its manufacturing capability for polymeric composites.
- Energy Innovation Centre - which is a one-stop-shop for the development of new battery chemistries and includes the Vehicle Energy Facility and Battery Materials Scale-up Pilot Line International Institute for Nanocomposites Manufacturing - which will be the first of its kind in the world
- International Institute for Product and Service Innovation - which is dedicated to SMEs with R&D
- National Automotive Innovation Campus - which will open in 2016 and will provide state-of-the-art environment for collaborative automotive research and development activities
- International Digital Laboratory
- Engineering Management Building

Warwick Business School

The university's Warwick Business School (WBS) offers first-class graduates, research and development capabilities, bespoke staff development, and practical learning for businesses. WBS is ranked 7th in the world by Forbes for its MBA.



"There is a real opportunity for growth in Coventry and Warwickshire. But it will require scientists, entrepreneurs and

business leaders to help support this growth and bridge the academic-industrial divide. We are fortunate to have the University of Warwick, one of the top UK universities, in our county and WMG undertakes collaborative R&D with companies all over the world, as well as being heavily involved in the local industry sector. It is a myth that it is only large companies who can engage in R&D, at WMG we work with SMEs through to global companies. Through technology transfer any company can work with our academic experts to create new processes, products or services. It's by working together that we can develop and innovate internationally competitive products of the future."

**Professor Lord Bhattacharyya, CBE,
Chairman of WMG, University of Warwick
www.warwick.ac.uk**



Managed Business Centres in Warwickshire

Centenary Business Centre, Nuneaton

Offers a great mix of office and light industrial workspace, housing a total of 63 units and is already home to a diverse range of successful businesses. The centre is perfect for small/start-up and established businesses alike and with a flexible 28-day licence, as well as a team of friendly professional staff - make this an ideal venue with excellent motorway and transport network links for your business requirements.

Come and join our business community.....simply call **024 7664 1399** for further details.

Studio 43

Studio 43 is a 'state of the art' fully equipped photography studio available to hire by the hour or day, offering a large creative space with changing rooms, make up stations and a green screen for videography. Phone **024 7674 1399**.

The Meeting Point

The Meeting Point is a large versatile space for your group requirements with complimentary tea and coffee. Phone 024 7664 1399.

Sir Frank Whittle Business Centre, Rugby

Close to J1 of the M1, this centre offers a warm welcome and is home to a mix of business in office and light industrial units. For further information call **01788 551500**.

Eliot Park Innovation Centre, Nuneaton

Built in 2005, Eliot Park is the most recent addition to the County Council's portfolio. This award winning environmentally friendly building offers flexible high spec with business friendly terms, ideally situated off J3 if the M6 the on-site cafe 'The Deli' is for your convenience and offers a relaxing area to un-wind. Offering a range of services for your business, including super fast broad band. Phone **024 7679 6400** for details.

First Office, Eliot Park Innovation Centre

In addition to our larger units, we have recently launched First Office, a unique opportunity for you to benefit from the prestige of Eliot Park Innovation Centre, without the larger overheads, guaranteed a dedicated desk within a shared office with lockable storage, your own telephone number and access to all the facilities of the building. Phone **024 7679 6400**.

Sir Frank Whittle

Business Centre: 01788 551500

Centenary Business Centres: 024 7664 1399

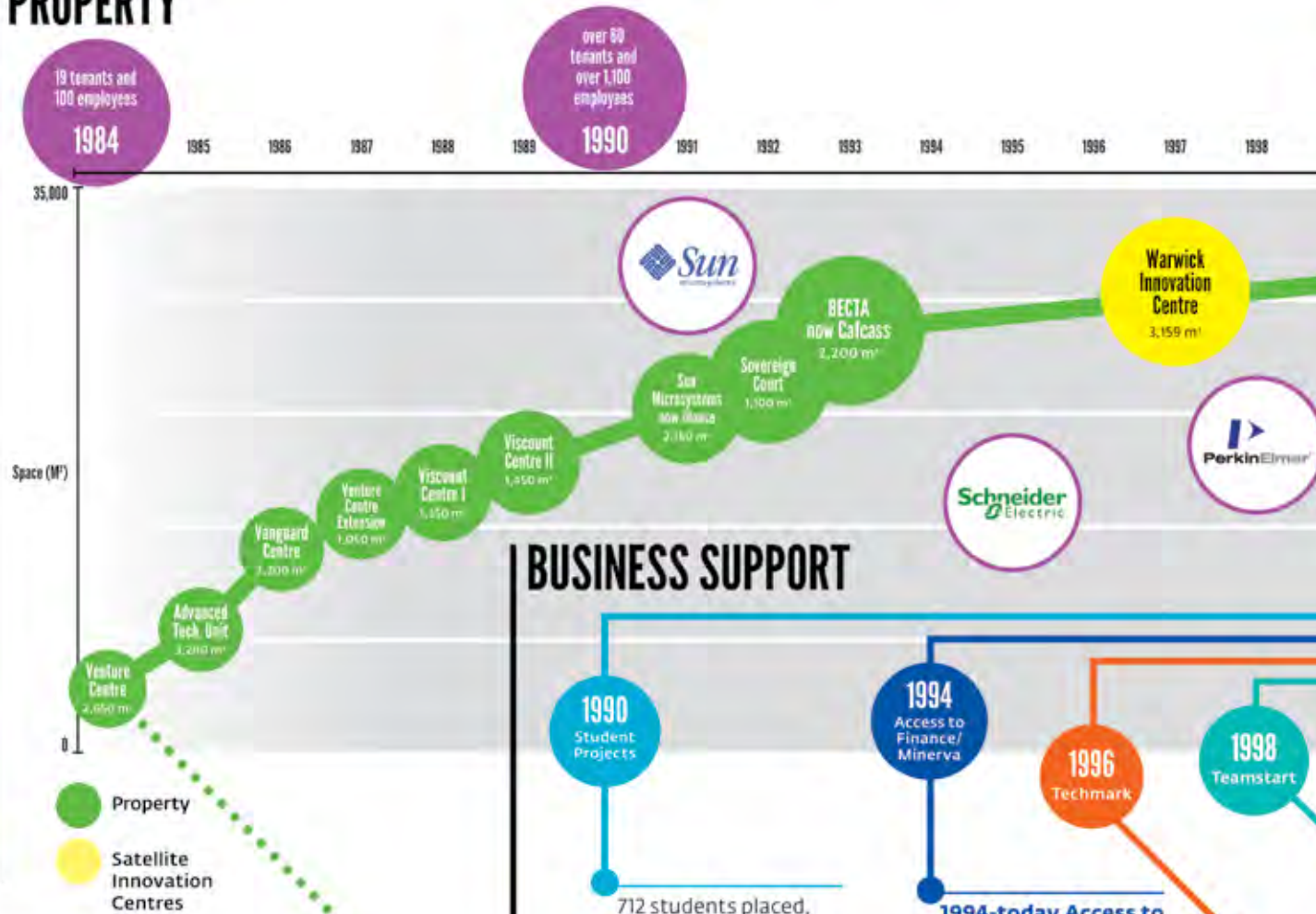
Eliot Park Innovation Centre: 024 7679 6400



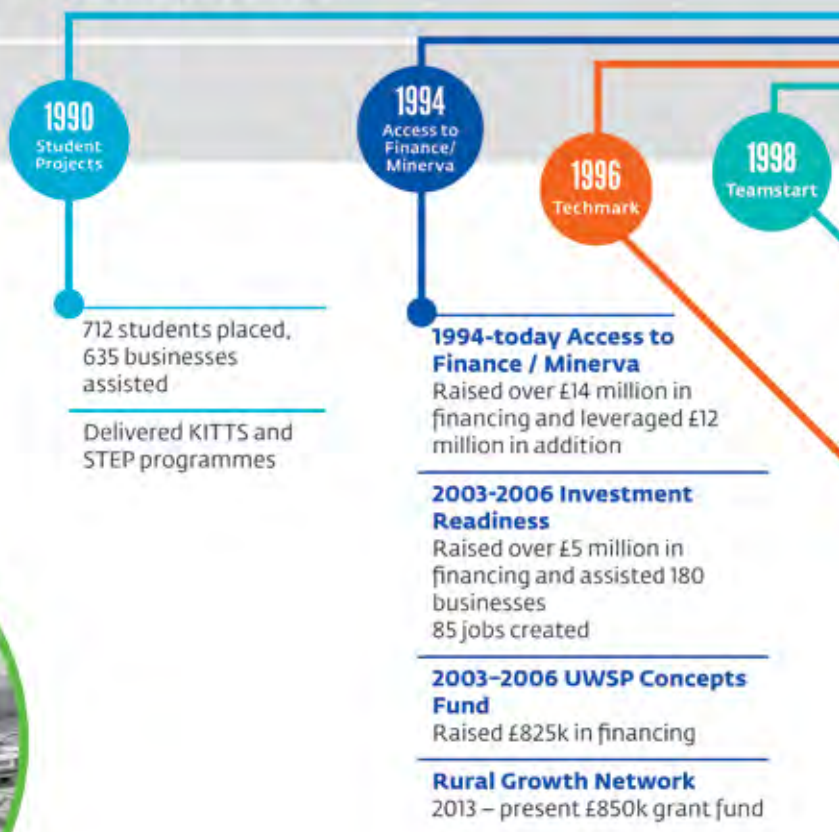
- 24/7 access
- Franking, colour copying, scanning
- Fully manned reception area
- CCTV surveillance
- Range of lifting equipment (not Eliot Park)
- Free parking
- Small business networking opportunities
- Meeting room for hire with Wi-Fi

30 YEARS OF INNOVATION AND GROWTH

PROPERTY



BUSINESS SUPPORT





University of Warwick Science Park



2007 Business Incubation

- Business creation process for experienced venturers
- Over 100 companies created and over 200 venturers trained
- Delivered Mustard Teamstart, Teamstart SG and Faststart
- Over 700 businesses assisted
- 1999-2001 SME Export Initiative**
Helped over 50 companies export
- 2000-2008 Clusters**
Over 130 businesses improved and over 10 Industry Clusters formed
- 2006-2011 Bridge to Growth**
Over 100 foreign-owned companies attracted to the UK
- 2010-11 Growing Success Program (export marketing)**
Over 25 businesses helped to export
- 2011-present UK Market Access Program**
Over 120 foreign-owned companies assisted

2009 Strategic Consultancy

- Business Transformation Service, Business Recovery Service, Coaching for High Growth
- Assisted over 85 businesses

2007 Ignite

- Over 500 businesses assisted
- Over 100 businesses incubated
- Over 150 jobs created

2009-2011 Advantage Proof of Concept Fund

- £5.8 million grant fund
- 148 jobs created

University of Warwick Science Park
The Venture Centre,
Sir William Lyons Road,
Coventry, CV4 7EZ
Telephone: +44 (0)24 7632 3000
Email: uwsp@uwsp.co.uk
www.warwicksciencepark.co.uk

Developing a Workforce for the Future

The region is emerging from the recession, fuelled by increasing demand for the services and products offered by local companies. To meet this demand, many businesses across Coventry and Warwickshire are looking to recruit - some of them for the first time in many years. In terms of the local labour supply, Coventry and Warwickshire have no shortage of qualified individuals.

Recruitment can be a time-consuming and resource-intensive task, especially for small and medium enterprises (SMEs) without human resources staff, but get it right and your business will reap the rewards and flourish. As a business within Coventry and Warwickshire you will be able to access a variety of support packages tailored to your business to ensure you can find the right people to expand your workforce, or develop the right skill set to match your business need.

The Employer Hub

The Employer Hub provides a comprehensive recruitment and training service, designed to meet the needs of employers. Working with key local agencies - each a specialist within the training and employment field - The Employer Hub offers a service to businesses that is without multi-agency confusion. In being a single point of contact, The Employer Hub simplifies the process of recruitment and training for local businesses.

Some of the services The Employer Hub can provide to your business include:

- Information and advice regarding the local labour market
- Support through the entire recruitment process; from job-listing to interview
- Screening and short-listing of candidates
- Interview support and free use of interview facilities
- On-going support for you and your new recruit
- Skills, training and apprenticeship advice
- Advice and access to grants and financial incentives

The Employer Hub's recruitment services are free of charge and the recruitment and training solutions are tailored to the needs of each business. The Employer Hub works in tandem with local universities and colleges, providing businesses with access to high-calibre candidates with the knowledge, experience and skills to fill vacancies in all sectors.

For more information on The Employer Hub, visit www.coventry.gov.uk or contact 024 7683 1278 or e-mail alex.dickson@coventry.gov.uk

Apprenticeships

An apprenticeship is a competence-based skill development programme, designed and endorsed by employers for their employees, which combines independently accredited work-based learning, off the job training and relevant experience in the job. They can be used to train both new and existing employees and will last a minimum of one year and up to four depending on the framework being undertaken.



Apprenticeships are available at Intermediate, Advanced and Higher (degree) level, covering more than 170 industries and 1,500 job roles. There are currently over 150,000 employers offering apprenticeships in more than 200,000 locations across England.

Apprentices are employed for a minimum of 30 hours a week and for at least one year and are paid an average of £170 a week; apprenticeships have their own minimum wage which went up to £2.73 an hour in October 2014. If you are a business employing up to 1,000 employees and interested in recruiting a young apprentice you could be eligible to receive a £1,500 Government grant.

Traineeships

Traineeships are workplace learning opportunities offered to young people possessing fewer qualifications. Like apprenticeships, traineeships are delivered in partnership with local training providers and incorporate a combination of workplace learning and taught courses. Unlike apprenticeships, traineeships are unpaid and typically last between six weeks and five months. Following the completion of a traineeship, trainees will possess the skills, qualifications and experience to continue on to an apprenticeship or directly into full-time employment.

For more information about apprenticeships or traineeships and to talk to someone about recruiting or general support, please contact the Apprenticeship Hub:

www.warwickshire.gov.uk/getanapprentice
Email: apprentice@warwickshire.gov.uk
Telephone: 01926 412649

Young Person's Employment Placement Scheme (YPEPS)

Coventry City Council believes in the talents of Coventry's youth. This is why the Young Person's Employment Placement Scheme (YPEPS) was created. The YPEP scheme works in partnership with local businesses to organise and offer six-month paid work placements to young people. Coventry City Council will make a generous salary contribution for the length of this placement as an incentive to the employer.



Founded in 1999, Penso design and manufacture vehicle components and niche vehicles, such as four-wheel steering Mercedes Vito taxis, popular in Europe.

In 2008, Penso employed 36 personnel, with a turnover of £3.5m. National and international demand for their products means that, by 2016, staffing will increase to 170 personnel, with a turnover of £20m.

To fill these jobs, Penso have not only championed the idea of recruiting locally, but are also investing in the future of their business by providing in-house training for young recruits.

The process of taking on a YPEPS placement does not require any extensive time or resource on the part of the employer. Coventry City Council's Youth Services team can assist in the design of a job description and will shortlist a number of suitable candidates for the employer to choose from. Following the completion of the placement, we are confident that the employer will have seen enough to justify offering the placement an extended contract or to recommend the young person to another employer if no internal vacancy exists.

For more information contact David Kersey
By phone: 024 7683 4801
By e-mail: david.kersey@coventry.gov.uk



Keepmoat are a market leader in community regeneration and housing.

In 2013 they employed Jade on a six month YPEPS placement.

"Jade showed a level of commitment that exceeded anyone we have recently employed...she quickly became a very popular member of the team."

After her placement, Jade began to earn a qualification in plumbing through an apprenticeship. As a result, Jade is developing her skills and Keepmoat continue to benefit from her professional attitude and determination.

Young people can rejuvenate a stagnant workforce and bring new ideas into a business. In employing young people, businesses are investing in their futures.

Advanced Manufacturing and Engineering firms benefit from training workshops

Business executives from engineering and manufacturing companies across Warwickshire have highly praised a breakfast event hosted by Midlands Professional Development.

The event staged a number of taster workshops, giving companies an insight to the benefits and importance of professional training for their employees. Guests from companies such as Futura Design, Coventry Manufacturing and Expert Tooling Automation were given the opportunity to explore the extensive range of training courses on offer.

Many guests were inspired by Peter Hucker, MD of Daly Engineering in Coventry, who gave the history and description of how his business has become stronger since working with Midlands Professional Development.

"Our people are our greatest asset and Daly's directors recognise and value their continuing contribution to our success", says Peter. "One of the benefits of working with MPD is their flexibility to meet our needs. By utilising their training and funding opportunities we saved £16,000 in training costs. We would have no hesitation in recommending them."

MPD work in partnership with PERA training, delivering a European Social Fund project entitled Skills Support for the Workforce. The scheme allows employers to up-skill their workforce, and is fully funded by the ESF. Clare McKenzie, Associate Director of MPD says: *"We were very pleased with the interest shown both in the event and the Skills Support for the Workforce project. We're looking forward to working with such a positive range of companies."*

For more information on the Skills Support for the Workforce Project, contact 024 7679 6422 or email info@midspd.co.uk

YOUR PARTNER FOR A SKILLED WORKFORCE

CORPORATE TRAINING

Charterhouse, our corporate training arm, offers a range of NVQs and customisable courses. It's the cost-effective, local solution to career development and ensuring the optimum running of your organisation. Courses include:

- Accredited Management Development
- Assessor and Verifier Qualifications
- Management and Business Skills
- Health and Safety
- First Aid
- IT
- Mentoring
- Food Safety
- Project Management

Most training available on campus or at your premises. Skills Support for the Workforce supports the development of your employees to improve their existing skills and knowledge through work-based learning including Mentoring, Team Leading & Management. It is fully funded by the European Social Fund (ESF) so there is no cost to your business. We can also offer free training in specialist areas such as welding and BIT. Contact us for more information.

**City College Coventry,
Swanswell Street,
Coventry, CV1 5DG**

Tel: 024 7679 1000

Freephone: 0800 616 202

info@covcollege.ac.uk

www.covcollege.ac.uk

PROFESSIONAL STUDIES COURSES

Recognised and accredited across a range of industry bodies, we provide career professionals with knowledge and skills needed to perform and progress.

- Accounting and Purchasing and Supply
- Management (Including ICM and CIPS)
- Business and Management (including CMI and PRINCE2)
- Construction (CIOB)
- Health and Safety (NEBOSH)
- Law (ILEX)
- Personnel (CIPD)

APPRENTICESHIPS

Skills shortage? Tackle it with apprentices from the College. Apprenticeships offer employers a cost-effective route to employing skilled and dedicated staff. We are the largest FE provider in the city and we've been providing apprenticeships for more than 30 years.

We'll help advertise, recruit and select a suitable apprentice. We'll support them throughout their training with modern facilities and regular appraisals. You'll provide on-the-job experience and training, helping to preserve skills and shaping your future workforce to meet your needs.

- Accounting
- Administration
- Childcare
- Construction Crafts
- Customer Service
- Hairdressing
- Health & Social Care
- Electrical Installation
- Engineering
- Light Vehicle
- Motor Vehicle
- Plumbing
- Public Service Vehicles (PSV)
- Team Leading & Management
- Telecoms
- Warehousing

Employers who use apprentices describe it as "A great deal for both sides". To find out more call Cynthia Jacox on 024 7679 1125 or email apprenticeships@covcollege.ac.uk

Keep your business one step ahead of the competition!

Training solutions at North Warwickshire & Hinckley College will equip your staff with the skills they need to help your business thrive.

Why choose us?

- We offer courses across a range of industries, such as Engineering, Manufacturing and Creative Arts
- We work with over 1,000 local, regional and national employers
- Close relationships with local enterprise partnerships in the East and West Midlands which enable us to tailor our offer to best match the demands of industry
- Wide range of industry-spec training from short courses to NVQs, delivered in the workplace

To find out how we can help you to increase your productivity and bottom line, contact our Business Development Team:

Call 024 7624 3222

Email: business.development@nwhc.ac.uk

Visit www.nwhc.ac.uk



We can help businesses like yours to succeed

North Warwickshire & Hinckley College provides totally flexible training solutions that impact on business performance.

We are a trusted provider to a wide range of businesses throughout Coventry and Warwickshire including MIRA, Triumph, Toyota Material Handling, Nuffield Health, George Eliot Hospital, Manufacturing Technology Centre, Toni & Guy, Twycross Zoo and Shapes Nursery.

What do we offer? We can provide Apprenticeships, Traineeships, distance learning and short courses. We also provide vocational qualifications delivered in the workplace and bespoke training packages developed in conjunction with you, to meet the needs of your business. Our expertise provides support to organisations across a wide range of sectors, including Health & Social Care, Motor Vehicle, Business Administration, Warehouse and Logistics and Management.

So why choose us?

Training focused on the specific needs and skills gaps within your business means that results are seen quickly and additional skills impact on efficiency and performance straightaway.

Bringing fresh ideas and enthusiasm into the business in the shape of an Apprentice means that you have the opportunity to 'grow your own'. You can develop the staff and skills needed to ensure a fully trained, competent workforce with the skills and qualifications you need now and in the future.

We can provide training and support to all sizes of business – and work with many SMEs to enable them to take advantage of apprenticeships and other opportunities.

Don't just take our word for it - see what our customers have to say:

"Arrowsmith are a first tier Aerospace manufacturer supplying the World's 2nd largest Aerospace industry in the UK.

For this we need to train world class engineers and this is why we employ local apprentices and graduates.

Warwickshire and Coventry have a history of training world class engineers and our local colleges and Universities are working with industry to continue this proud heritage."

To find out how we can help you to increase your productivity and bottom line, contact our Business Development Team:

Call 024 7624 3222

Email business.development@nwhc.ac.uk

Visit www.nwhc.ac.uk



**DO YOU NEED TO RECRUIT NEW PEOPLE?
ARE YOU LOOKING TO UPSKILL
OR TRAIN YOUR STAFF?**



There has never been a better time to EMPLOY AN APPRENTICE!

GROW YOUR BUSINESS WITH APPRENTICESHIPS



77% of employers believe Apprenticeships make them more competitive.

- ▶ Business Administration & IT
- ▶ Customer Service & Retail
- ▶ Leadership & Management
- ▶ Engineering
- ▶ Electrotechnology
- ▶ Motor Vehicle
- ▶ Childcare
- ▶ Health & Social Care
- ▶ Construction
- ▶ Hospitality & Catering
- ▶ Creative & Cultural
- ▶ Performing Arts



Interested in employing an apprentice?
Call us on **01789 266 245** or visit
www.stratford.ac.uk to find out more.

3034064



**WARWICKSHIRE
COLLEGE
GROUP**

Leading YOU to success

Train with the best to secure your business growth

Our industry experts can:

- tackle your skill shortages
- provide professional and supportive advice
- offer specialist training and flexible courses
- show a clear return on your training investment
- introduce you to ambitious, business-minded apprentices

WE'RE WORKING WITH
1,500
EMPLOYERS
NATIONALLY!

For high-quality training and business support call **0300 456 0049** or employers@warkscol.ac.uk

www.warwickshire.ac.uk/employers



ROYAL LEAMINGTON SPA COLLEGE RUGBY COLLEGE MORETON MORRELL COLLEGE PERSHORE COLLEGE HENLEY-IN-ARDEN COLLEGE WARWICK TRIDENT COLLEGE

3034050

Businesses, get active!

Download your free Business Finder CD at www.burrows.co.uk/coventryandwarwickshire

Coventry and Warwickshire Database is now online!

The online version enables you to search for businesses by name, type of business and location. Simply type what you are looking for and decide how you want to sort the results. The database is FREE to join for all local businesses, so why not register today at www.burrows.co.uk/coventryandwarwickshire.

Search for a Coventry business

Company Name	<input type="text"/>	eg. Smith
Nature of Business	<input type="text"/>	eg. Accountant
Address or Postcode	<input type="text"/>	eg. Irving Road or CV1 2EZ
Sort results by	<input checked="" type="radio"/> Company Name <input type="radio"/> Nature of Business <input type="radio"/> Address or Postcode	<input type="button" value="Search"/>

You can also keep your organisation's details up to date; just find your entry and click the update link. This will ensure potential customers have access to accurate information about your company.

Interactive Business Finder CD - FREE download!!

The Business Finder has powerful search features, allowing multiple fields of the database to be selected and integrated. The additional Bookmark Feature allows you to save the search results and refer back to them at any time – an invaluable marketing tool. These results can be further manipulated with the customisation of fields and the sorting of data.

Upgrading: Once you have installed your Business Finder, additional features can be upgraded for a one-off charge from **£150 to £400 + VAT**, dependent on the level of service you require.

Upgraded versions print address labels, compile and print reports, perform mail shots and export data.



Please call **020 8773 3060** for more information.



Coventry and Warwickshire

Growth Hub

a clearing house for business

The Coventry and Warwickshire Growth Hub acts as a single point of contact for growing businesses with additional targeted support for Advanced Manufacturing and Engineering companies:-

Free information, advice and support

A Growth Hub Advisor will be assigned to businesses who express an interest in growth by working with them on a one-to-one basis to broker and offer:

- **Access to Finance** – grants for capital investment
- **Innovation Support** – for new products and processes
- **International Trade** – to research potential export markets
- **Skills 4 Growth** – supporting skills needs
- **Business Support** – to access key support to enable growth
- **Inward Investment** – tailored advice and property searches
- **Planning Advice** – supporting businesses to grow into new locations

Here's how to contact us:

Tel: 0300 060 3747

Email: contact@cwclearinghouse.co.uk

Web: www.cwlep.com/growth-hub



 Regional Growth Fund