



@CWCHAMPIONS

Coventry and Warwickshire

Champions



Adam Dent, Advent Communications

@CWCHAMPIONS

#ChampsSeptember

www.coventry-warwickshire.co.uk





@CWCHAMPIONS

Coventry and Warwickshire

Champions



@CWCHAMPIONS

**The Very Reverend John Witcombe,
Dean of Coventry Cathedral**













@CWCHAMPIONS

**Jon Dutton, Director of Projects & People,
The Rugby Football League**



Ladbrokes
RUGBY LEAGUE
FOUR NATIONS

FOUR NATIONS CONTEXT

1. Last played in the UK in 2011
2. 2nd largest Rugby League tournament after the World Cup
3. New Zealand current champions (2014)
4. 2016 features:
 - a. England (ranked 3 in world)
 - b. New Zealand (ranked 1 in world)
 - c. Scotland (European Champions, ranked 9 in world)
 - d. Australia (current World Cup holders and ranked 2 in world winners)
5. 7 games in 6 stadiums over 4 weeks of competition – 5 live on BBC

TOURNAMENT SCHEDULE

Match	Date	Match	KO	Venue
1	Friday 28 th October	Australia v Scotland	20:00	KC Lightstream Stadium, Hull
2	Saturday 29 th October	England v New Zealand	14:30	The John Smith's Stadium, Huddersfield
3	Saturday 5 th November	England v Scotland	17:30	Ricoh Arena, Coventry
4		New Zealand v Australia	20:00	
5	Friday 11 th November	New Zealand v Scotland	20:00	The Zebra Claims Stadium, Workington
6	Sunday 13 th November	England v Australia	14.00	The Stadium, Queen Elizabeth Olympic Park, London
7	Sunday 20 th November	Final	14:30	Anfield, Liverpool

TOURNAMENT OBJECTIVES

1. England to win
2. Sell 130K+ tickets
3. Achieve cumulative domestic audience of 10m+
4. Deliver a profit back to the centre
5. Create tangible economic and social impact opportunities
6. Give customers a great experience
7. Learn lessons for next time

RUGBY LEAGUE 2016



FOUR NATIONS

TICKETS FROM £20 - RUGBY-LEAGUE.COM/TICKETS

DOUBLE HEADER

RICOH ARENA, COVENTRY
SATURDAY 5 NOVEMBER

ENGLAND v SCOTLAND
NEW ZEALAND v AUSTRALIA



RUGBY LEAGUE
FOUR NATIONS



NEW ZEALAND
KIWIS



SCOTLAND
RUGBY LEAGUE



Ladbrokes
RUGBY LEAGUE
FOUR NATIONS



CONTEXT

- Paul Barrière – 1954
- 2000
- RLWC2013 – 14th edition
- RLW2021 – More

ONE GAME

MORE ENGAGING

A GLOBAL SHOWCASE IN SPORT'S
MOST FAMOUS STADIA

MORE VISIBLE

**RECORD
RETURN**
TO THE RLIF

MORE SUPPORT

A FUNDED
**DOMESTIC
LEGACY**
OF RUGBY LEAGUE
INFRASTRUCTURE

MORE WELCOMING

MORE ASPIRING

GUARANTEED
RLIF RIGHTS FEE OF
£7.5M

MORE ASSURED

DIRECT ECONOMIC
IMPACT TO ENGLAND OF
£74.6M

MORE VALUABLE

MORE EXPERIENCED

1M
SPECTATORS

£15M
IN COMMITTED
GOVERNMENT
FUNDING

MORE COMMITTED

**INCREASED PROFILE
AND VISIBILITY**
FOR THE WOMEN'S WORLD CUP
AND DISABLED SPORT

MORE AMBITIOUS

LONG-TERM
**INTERNATIONAL
DEVELOPMENT**
AND KNOWLEDGE TRANSFER

MORE KNOWLEDGE

MORE GROWTH



THE BID

- £25m secured from government – Northern Powerhouse
- Submitted in June
- 4 contenders
- Shortlisted to 2
- Decision announced on November 17th

NEXT STEPS

- If successful 2017 – tender process for prospective hosts
- 12 venues for 31 games





@CWCHAMPIONS

**Martin Reeves, Chief Executive,
Coventry City Council & WMCA**

Coventry & Warwickshire Champions Meeting

Wednesday 28th September

Dr Martin Reeves
Chief Executive, Coventry City Council
Chief Executive, WMCA



WEST MIDLANDS
COMBINED AUTHORITY



WEST MIDLANDS
COMBINED AUTHORITY

GROWING THE UK ECONOMY
THROUGH A MIDLANDS ENGINE

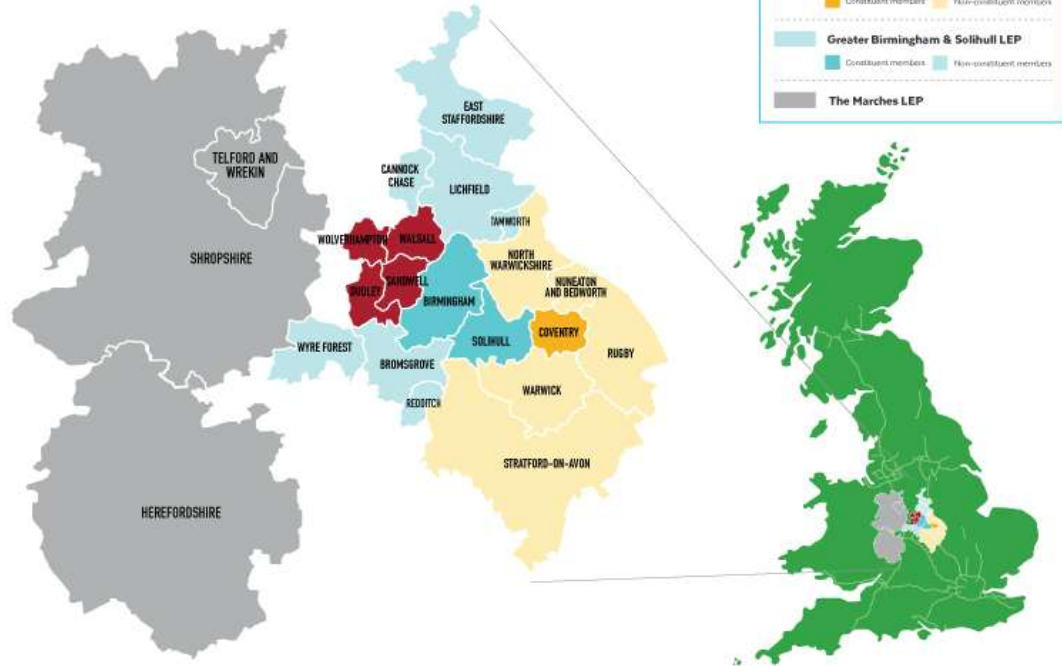
BIRMINGHAM • COVENTRY • DUDLEY • SANDWELL • SOLIHULL • WALSALL • WOLVERHAMPTON

Scale of ambition

3 LEPs – Key Benefits

- 4 million people
- £80bn GVA
- 20 local authorities
- 90% self-containment

West Midlands Combined Authority by Local Enterprise Partnership Area



The vision....

By 2030 the West Midlands will have unrivalled growth benefiting the region and the country. Its economic growth will have delivered better life chances, raised aspirations and created a better quality of life for all its residents



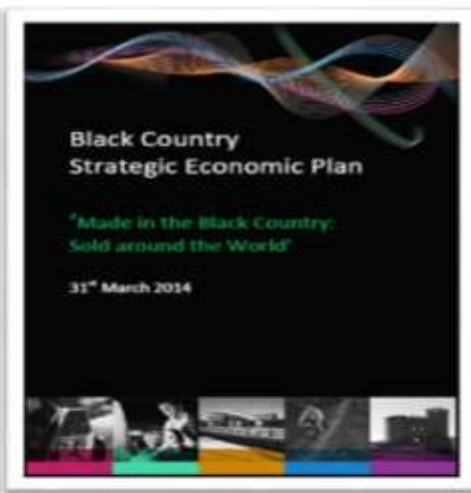
WEST MIDLANDS
COMBINED AUTHORITY
Strategic Economic Plan

MAKING OUR MARK...

...THE WEST MIDLANDS, THE BEST REGION IN THE UK TO DO BUSINESS



A family of SEPs



Building on strengths, tackling the challenges

- Location, connectivity and economic geography
- History of manufacturing excellence
- Cultural diversity
- Track record in innovation

But

- Low value companies in low growth sectors
- Low business birth and survival rates in some areas
- High proportion of residents with low skills
- Poor life chances for some residents caused by mental health issues, worklessness and complex needs

DELIVERING THE VISION BY 2030 – THE FIGURES



Productivity (measured in Gross Value Add-GVA per head) will be

5% higher than the national average



An extra
1,600ha
of brownfield land, for first class employment land of national significance

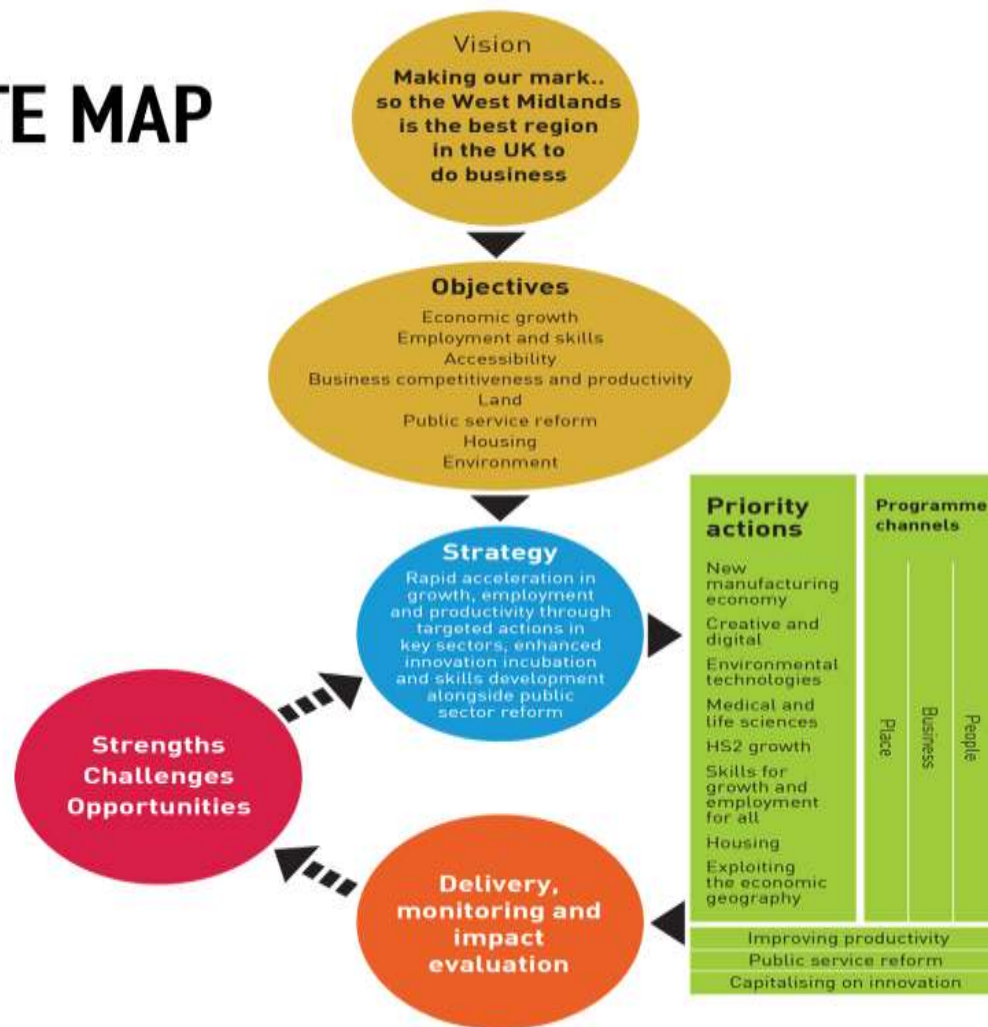
Current
3.9 billion
deficit between taxes raised and public expenditure in the area eliminated



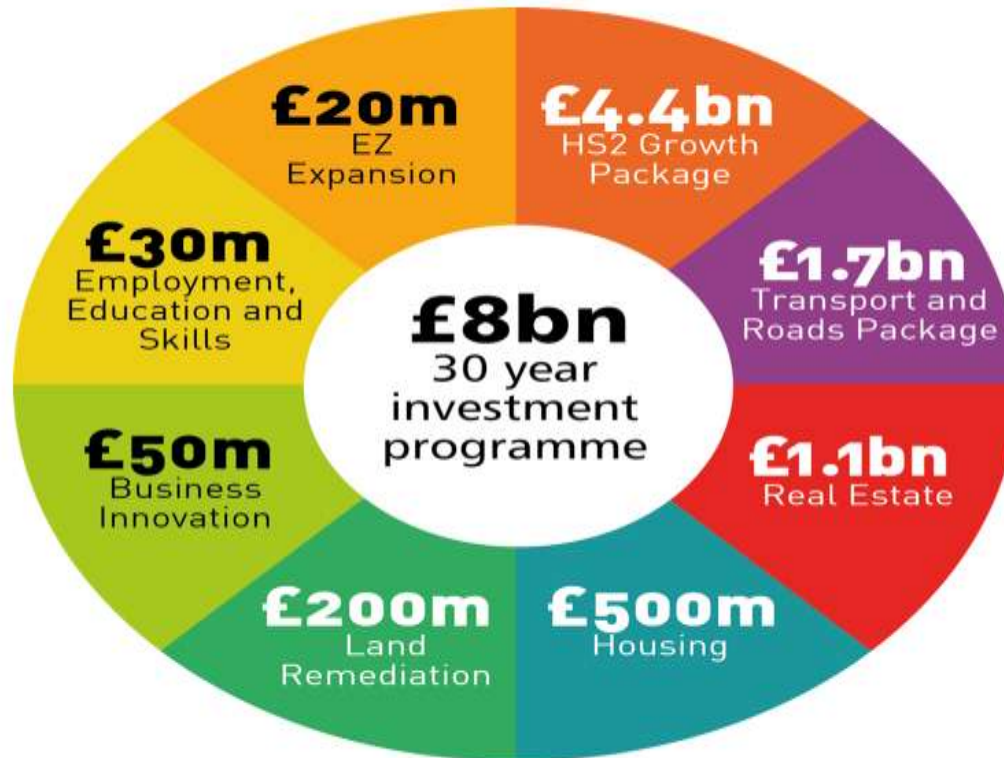
Rail travel
to London **38**
minutes



ROUTE MAP

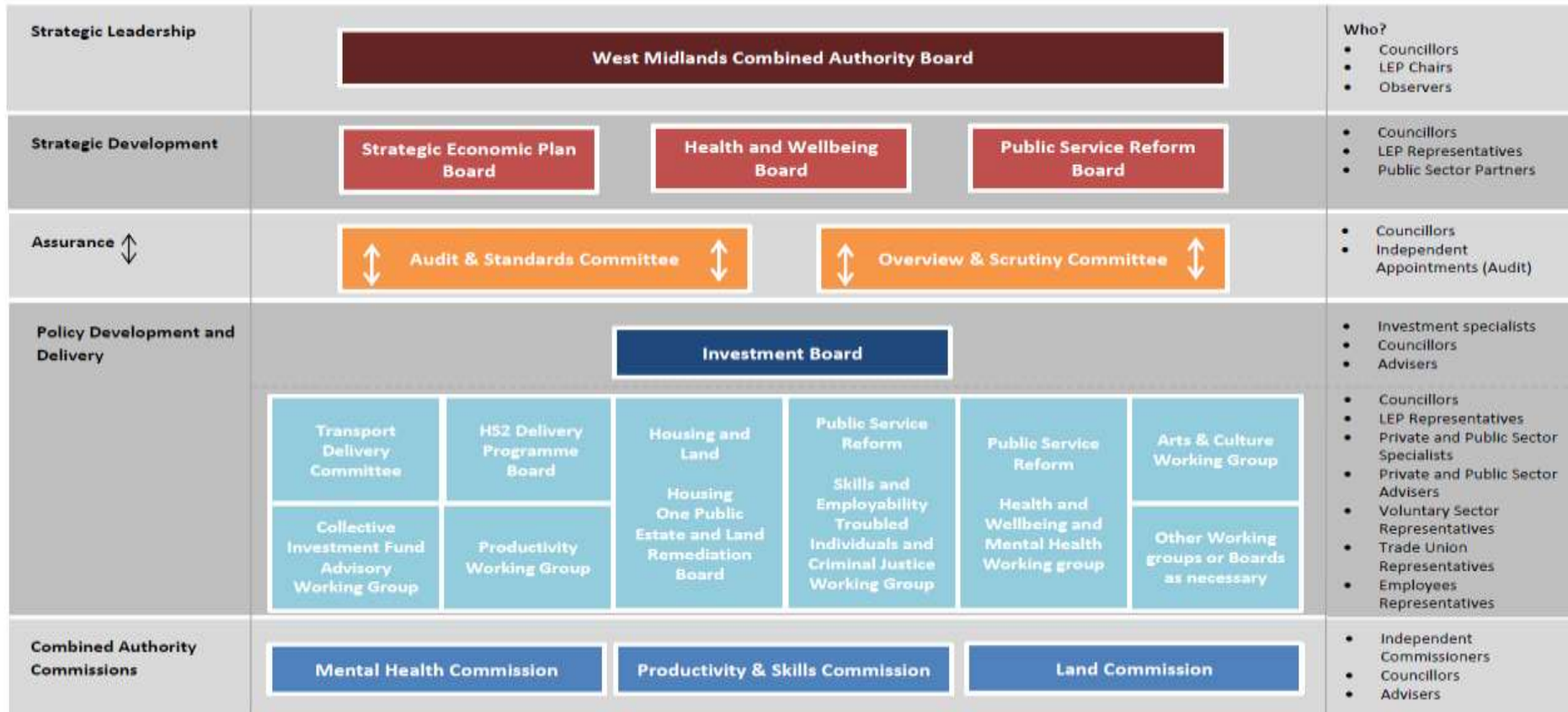


£8bn INVESTMENT PACKAGE



Underpinning - WMCA Public Service Reform Agenda
Key link to the devolved 19+ Adult Skills Budget

Governance Framework





*



*



*



*



*



west midlands
police and crime
commissioner

**



**



WEST MIDLANDS
COMBINED AUTHORITY

* These Councils will formally become members by the end of 2016

** Observer members

Find out more at www.westmidlandscombinedauthority.org.uk

Martin Reeves
Chief Executive

Telephone: 024 7683 3232

Mobile: 07852 976 199

E-mail: martin.reeves@coventry.gov.uk

Twitter: [@martinreeves](https://twitter.com/martinreeves)



Coventry City Council
Council House
Earl Street
Coventry, CV1 5RR
www.coventry.gov.uk



WEST MIDLANDS
COMBINED AUTHORITY

Martin Reeves
Chief Executive

07852 976199

Martin.Reeves@coventry.gov.uk
www.westmidlandscombinedauthority.org.uk



@martinreeves

www.westmidlandscombinedauthority.org.uk

BIRMINGHAM • COVENTRY • DUDLEY • SANDWELL • SOLIHULL • WALSALL • WOLVERHAMPTON



@CWCHAMPIONS

**Mike Crone, Purchasing & Property Director,
Jaguar Land Rover**

JAGUAR LAND ROVER

Our Business



Formed in 2008 when Tata purchased Jaguar Cars and Land Rover from Ford Motor Company

Jaguar Land Rover is headquartered in Coventry and is the largest premium automotive business in the UK

11 vehicle lines, 3 UK vehicle assembly plants, with 2 UK design and engineering sites

Nearly 40,000 people globally with headcount that has almost doubled over the last five years

Plants in China, India, Brazil and one in construction in Slovakia

Employs over 9,000 engineers and designers

Sales network in 154 countries

Within Coventry we have over 6,000 personnel



JAGUAR LAND ROVER

Our Business



Formed in 2008 when Tata purchased Jaguar Cars and Land Rover from Ford Motor Company

Jaguar Land Rover is headquartered in Coventry and is the largest premium automotive business in the UK

11 vehicle lines, 3 UK vehicle assembly plants, with 2 UK design and engineering sites

Nearly 40,000 people globally with headcount that has almost doubled over the last five years

Plants in China, India, Brazil and one in construction in Slovakia

Employs over 9,000 engineers and designers

Sales network in 154 countries

Within Coventry we have over 6,000 personnel



JAGUAR LAND ROVER

Rich Heritage



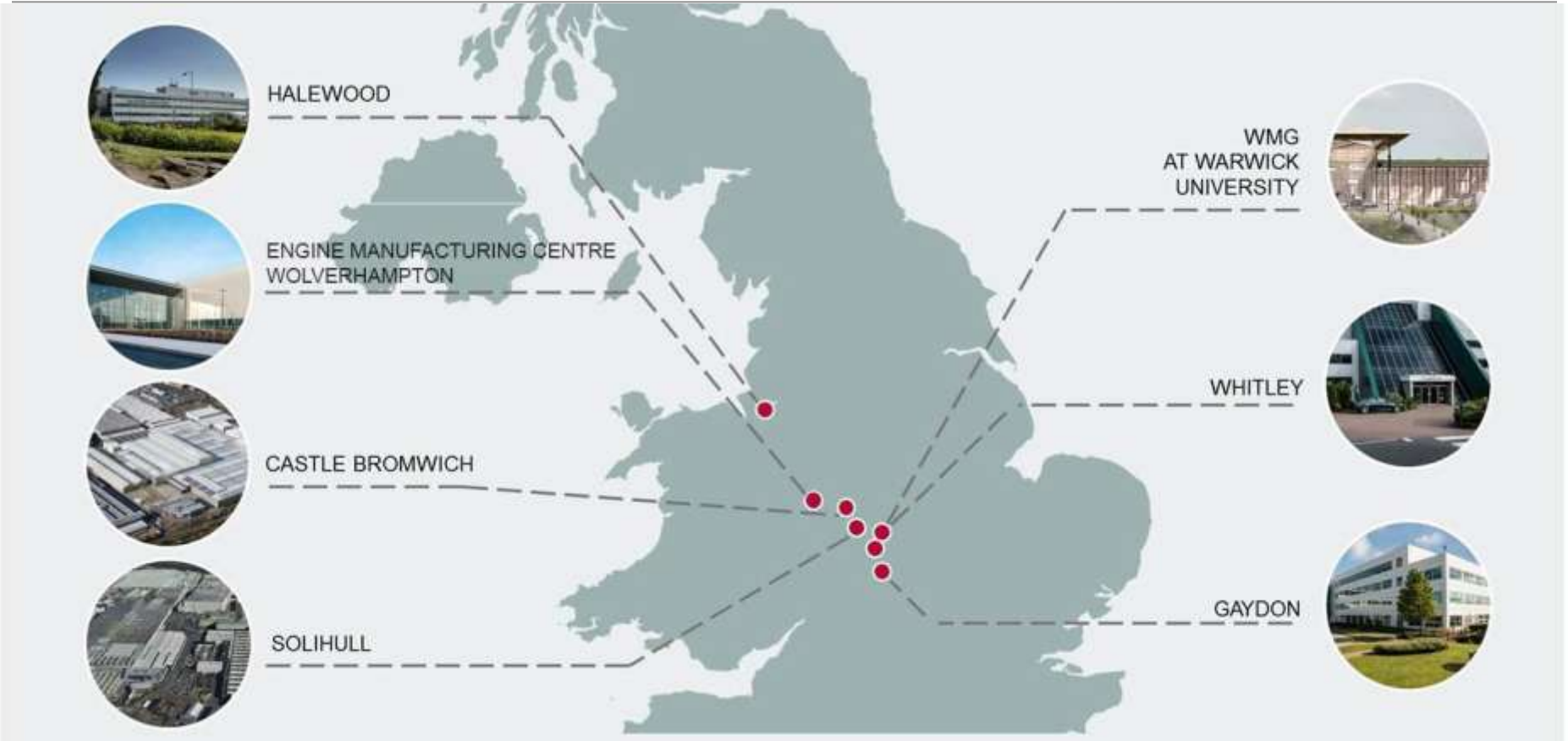
Jaguar Cars started back in 1922 when the Swallow Side Car company was founded

First Land Rover was produced in 1948 at Solihull



JAGUAR LAND ROVER

Manufacturing and Product Development Facilities



JAGUAR LAND ROVER

In The UK Economy



LEADING PREMIUM AUTOMOTIVE BUSINESS IN THE UK

- The only volume manufacturer of luxury vehicles in the UK
- The largest investor in automotive R&D and engineering in the UK



A MAJOR PROVIDER OF HIGHLY SKILLED JOBS IN THE UK

- Jaguar Land Rover is the largest automotive employer in the UK
- Supports up to 275,000 people through the supply chain, dealer network and wider economy
- Recruited 20,000 people in the last 5 years



ONE OF THE UK'S LARGEST EXPORTERS BY VALUE

- Almost 80% of production exported from three plants in the UK



LED BY ADVANCED DESIGN, ENGINEERING AND TECHNOLOGY

- Has a world-class team with over 9,000 engineers and designers
- Invests £150 million in an advanced research facility together with Warwick Manufacturing Group and TMETC at University of Warwick to accelerate innovation
- £1billion investment in state-of-the-art advanced engine facility

JAGUAR LAND ROVER

Skills and Young People



2 million young people across the world given an introduction to engineering by 2020

300,000 young people engaged in the UK this year alone

More than **750 students** “earning and learning” in our **apprenticeship** programme

More than **1,600 graduates** have joined Jaguar Land Rover’s two-year graduate programme over the last five years



JAGUAR LAND ROVER

Coventry Operations



"To create a workplace environment that becomes
the spiritual home of Jaguar Land Rover"

JLR Workplace Experience Design

JAGUAR LAND ROVER

Existing Whitley Site



Worldwide Headquarters

Corporate Staffs

Finance, HR, Marketing, Sales, PR,
Property & Purchasing

Powertrain Operations

Jaguar Design

c5,400 JLR Employees

Circa 120 acres



JAGUAR LAND ROVER

Whitley Powertrain Expansion

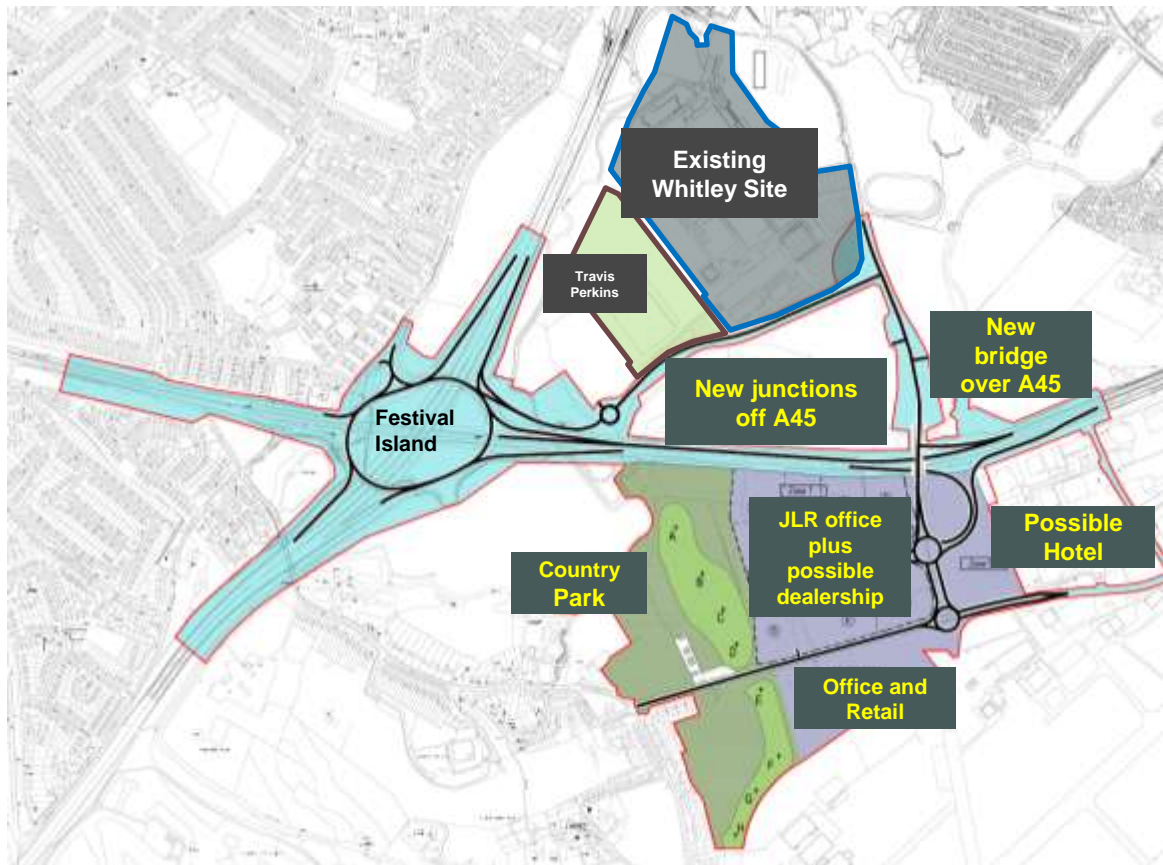


NEW PROPULSION CENTRE

A +£200m investment will more than double our Powertrain Engineering and Test capability, enabling development of the next generation of propulsion systems for our cars

JAGUAR LAND ROVER

Whitley South Overview



- Outline planning permission granted for a 58 acre technology park on 26th April 2016 with JLR as anchor tenant
- Outline planning gives approval for JLR offices, country park, dealership, hotel, retail and other offices
- Country park, road improvements, new junctions and bridge over A45 to be delivered by Developer
- JLR plot is 30.6 acres
- Delivery will be phased with a total provision for up to 4,000 staff
- Target occupation for phase 1 is 2018



NATIONAL AUTOMOTIVE INNOVATION CENTRE

The £150 million National Automotive Innovation Centre (NAIC) will open in second half of 2017. It will provide a state-of-the-art facility for Jaguar Land Rover's advanced research team and collaborative partners from academia, the supply chain and other industries

JAGUAR LAND ROVER SVO at Ryton



UK SPECIAL VEHICLE OPERATIONS TECHNICAL CENTRE AT RYTON

The facility is Jaguar Land Rover's global centre of excellence for the creation of high-end luxury bespoke and extreme performance vehicles

JAGUAR LAND ROVER

Greater Warwickshire Developments



GAYDON TRIANGLE

The new £200m facility will provide a home for all colleagues involved in the product design and creation process

JAGUAR LAND ROVER

Greater Warwickshire Developments



VEHICLE OPERATIONS FEN END

This £65m project will create a new workshop and operations facility for our Vehicle Operations team



WE ARE MOVING AT PACE



WE NEED TO HELP EACH OTHER

Come in WE'RE

OPEN



THANK YOU

Mike Crone
Purchasing & Property Director

Jaguar Land Rover
W/1/26 Abbey Road, Whitley
Coventry CV3 4LF, UK
jaguarlandrover.com



Adam Dent, Advent Communications

July 17, 2016

Going places
KENILWORTH

Going places
KENILWORTH

Going places
KENILWORTH

Kenilworth Castle is a large, circular, stone ruin in the town of Kenilworth, Warwickshire. It was built by King Henry II in 1163 and was one of the most important castles in England. The castle was destroyed by King Edward I in 1272 and has since been a ruin. It is now a Grade I listed building and is a popular tourist attraction. The castle is surrounded by a moat and has a large, circular, stone ruin in the center. It is a very important part of the town's history and is a very popular tourist attraction.

Kenilworth Castle is a large, circular, stone ruin in the town of Kenilworth, Warwickshire. It was built by King Henry II in 1163 and was one of the most important castles in England. The castle was destroyed by King Edward I in 1272 and has since been a ruin. It is now a Grade I listed building and is a popular tourist attraction. The castle is surrounded by a moat and has a large, circular, stone ruin in the center. It is a very important part of the town's history and is a very popular tourist attraction.

Kenilworth Castle is a large, circular, stone ruin in the town of Kenilworth, Warwickshire. It was built by King Henry II in 1163 and was one of the most important castles in England. The castle was destroyed by King Edward I in 1272 and has since been a ruin. It is now a Grade I listed building and is a popular tourist attraction. The castle is surrounded by a moat and has a large, circular, stone ruin in the center. It is a very important part of the town's history and is a very popular tourist attraction.

THE SUNDAY TIMES

ADVENT COMMUNICATIONS, 2, Edison Building, Electric Wharf, Sandy Lane, Coventry, CV1 4JA
 T: 024 7663 3636 F: 024 7663 4906 E: info@advent-communications.co.uk

October 2016



Champion of Champions

When people work towards a common goal, the results can be staggering. Read on and discover how people have brought together their efforts for Coventry and Warwickshire.

For the Coventry and Warwickshire Community Foundation, the results of its fundraising efforts have been staggering. The foundation, which was set up in 2007, has raised over £10 million for the Coventry and Warwickshire Community Foundation. The foundation has been successful in raising money for a wide range of projects, including the Coventry and Warwickshire Community Foundation. The foundation has been successful in raising money for a wide range of projects, including the Coventry and Warwickshire Community Foundation. The foundation has been successful in raising money for a wide range of projects, including the Coventry and Warwickshire Community Foundation.

The Coventry and Warwickshire Community Foundation has been successful in raising money for a wide range of projects, including the Coventry and Warwickshire Community Foundation. The foundation has been successful in raising money for a wide range of projects, including the Coventry and Warwickshire Community Foundation. The foundation has been successful in raising money for a wide range of projects, including the Coventry and Warwickshire Community Foundation.

October 2016

REGIONAL BENEFIT

The Coventry and Warwickshire Community Foundation has been successful in raising money for a wide range of projects, including the Coventry and Warwickshire Community Foundation. The foundation has been successful in raising money for a wide range of projects, including the Coventry and Warwickshire Community Foundation. The foundation has been successful in raising money for a wide range of projects, including the Coventry and Warwickshire Community Foundation.



The Coventry and Warwickshire Community Foundation has been successful in raising money for a wide range of projects, including the Coventry and Warwickshire Community Foundation. The foundation has been successful in raising money for a wide range of projects, including the Coventry and Warwickshire Community Foundation. The foundation has been successful in raising money for a wide range of projects, including the Coventry and Warwickshire Community Foundation.

The Coventry and Warwickshire Community Foundation has been successful in raising money for a wide range of projects, including the Coventry and Warwickshire Community Foundation. The foundation has been successful in raising money for a wide range of projects, including the Coventry and Warwickshire Community Foundation. The foundation has been successful in raising money for a wide range of projects, including the Coventry and Warwickshire Community Foundation.

The Coventry and Warwickshire Community Foundation has been successful in raising money for a wide range of projects, including the Coventry and Warwickshire Community Foundation. The foundation has been successful in raising money for a wide range of projects, including the Coventry and Warwickshire Community Foundation. The foundation has been successful in raising money for a wide range of projects, including the Coventry and Warwickshire Community Foundation.

The Coventry and Warwickshire Community Foundation has been successful in raising money for a wide range of projects, including the Coventry and Warwickshire Community Foundation. The foundation has been successful in raising money for a wide range of projects, including the Coventry and Warwickshire Community Foundation. The foundation has been successful in raising money for a wide range of projects, including the Coventry and Warwickshire Community Foundation.

stand out

ADVENT COMMUNICATIONS, 2, Edison Building, Electric Wharf, Sandy Lane, Coventry, CV1 4JA
 T: 024 7663 3636 F: 024 7663 4906 E: info@advent-communications.co.uk

stand out

ADVENT COMMUNICATIONS, 2, Edison Building, Electric Wharf, Sandy Lane, Coventry, CV1 4JA
 T: 024 7663 3636 F: 024 7663 4906 E: info@advent-communications.co.uk

Creating powerful, lasting connections between
local businesses and schools and colleges in
Coventry & Warwickshire

Enterprise Adviser Network - Launch event

GET INVOLVED

Thursday, October 20, 4.15pm – 6.30pm

Come along to see how you can get involved.

- Invitation open to schools and colleges across Coventry and Warwickshire
- Employers invited to see how they can become involved in the network
- Linking employers with schools and colleges to equip students with the skills they and their future bosses need
- More than 20 partnerships between businesses & schools and colleges already formed



**The Lloyds Bank Advanced Manufacturing Training Centre
on the MTC's Ansty Park campus, Coventry, CV7 9JU**

For more info and to book your place, email: david.lennox@cwgrowthhub.co.uk



RISING
GLOBAL
PEACE
FORUM

Photo: D.Khamissy / UNHCR

RISING 16: The Ripple Effect
15 - 16 November 2016

@CWCHAMPIONS

Coventry and Warwickshire

Champions

New Champions in 2016



Bablake



HAV

Pro Sound with Vision



Juice
PLUS+



Warwick School



New Champions – September 2016

Serious Games International

Cross 8 Ltd

Woodsford TradeBridge Ltd

Reboot & Release



Coventry and Warwickshire Champions

Next meeting
Wednesday 23rd November

7.30am to 9.30am

www.coventry-warwickshire.co.uk

